

---

## **R.C. TALMEY ELEMENTARY SCHOOL SIX PREFABRICATED CLASSROOMS**

---

<b>TARGET CONSTRUCTION START:</b>	February 2025
<b>TARGET COMPLETION:</b>	September 2025
<b>PROJECT BUDGET:</b>	\$6.5 Million
<b>FUNDING SOURCES:</b>	Ministry of Education and Child Care Capital Plan - \$9 Million (maximum)
<b>CONSULTANT:</b>	F.J. Geyer Consulting
<b>CONSTRUCTION MANAGER:</b>	Unitech Construction Management Ltd.
<b>PROJECT MANAGER:</b>	Richmond Project Team Enquiries: Karen Kwan, 604-308-1226

### **BACKGROUND**

The 2024/2025 Richmond Board of Education Capital Plan included a six-classroom addition for R.C. Talmey Elementary in order to partially address the population and enrolment growth in the City Centre and West Cambie planning areas.

The Ministry of Education and Child Care (MECC), at its Capital Working Session with executives from high growth school districts in the Lower Mainland/Interior/Vancouver Island 28 June 2023, emphasized the need to investigate opportunities for prefabricated construction and repeatable floor plans as a means for expediting much needed classroom space in a faster, more cost-effective manner than conventional construction.

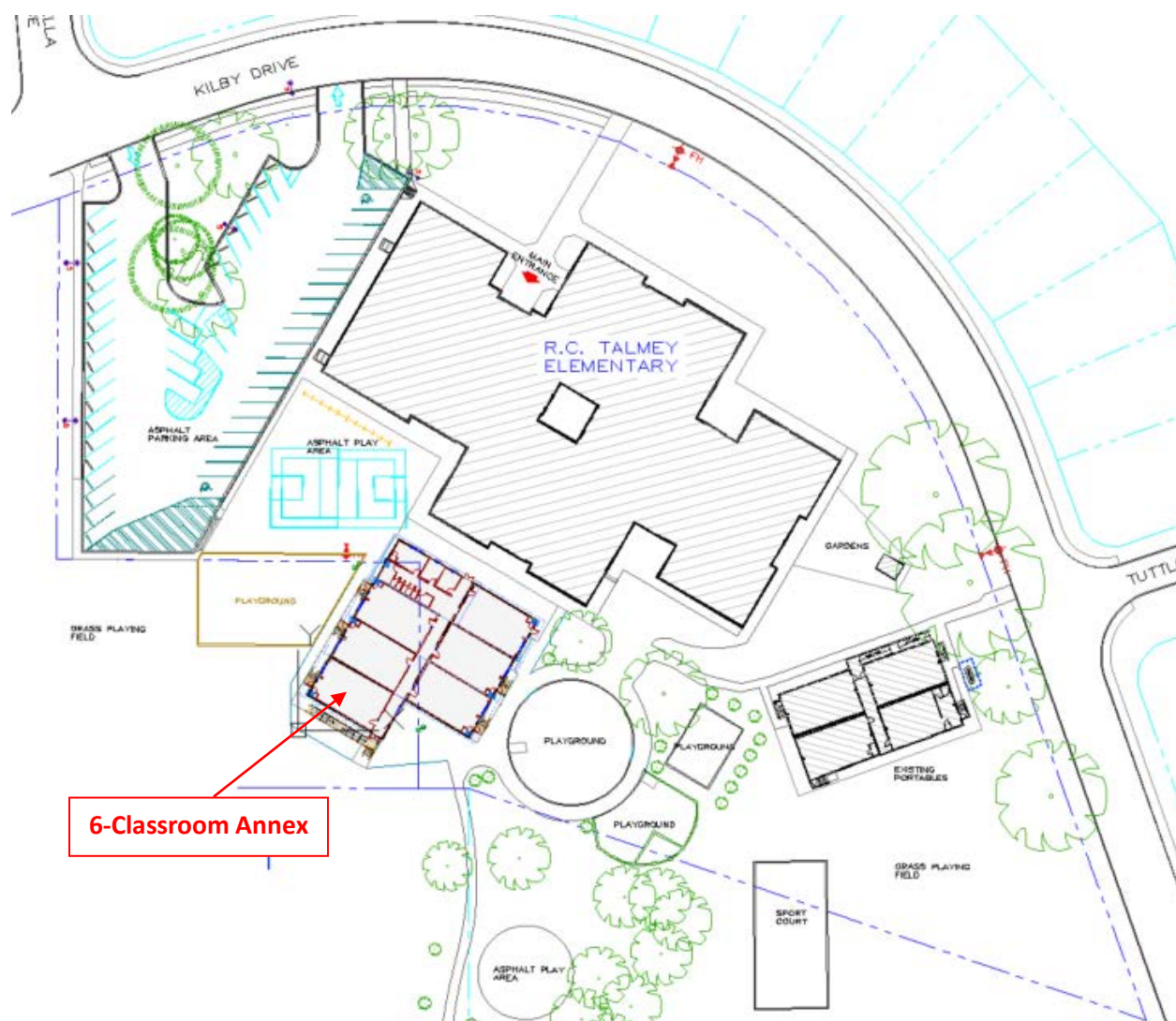
In response to MECC's mandate, on 30 August 2023 the Richmond School District designed and submitted an unsolicited proposal to install fully self-contained, prefabricated (modular) classroom annexes at two City Centre area elementary schools (Brighthouse, Cook) and two West Cambie area elementary schools (Talmey and Tomsett). R.C. Talmey Elementary is the third prefabricated classrooms project approved by MECC for School District No. 38 (Richmond).

### **PROJECT SCOPE**

- Design and factory prefabrication of individual energy efficient, low-carbon classroom and specialty (washroom, learning assistance) units, with exteriors to match cladding style and colours of the school.
- Site preparation for the six-classroom annex, including excavation, backfill, retaining wall, underground utilities, on-site fire hydrant, parking lot expansion and fire lane.
- Delivery and installation of the prefabricated six-classroom annex, including aircraft-grade aluminum ramps and stairs.
- Playground addition, landscaping and move-in.

## PROJECT STATUS

- Project approval and funding agreement received from the Ministry of Education and Child Care 03 July 2024.
- Design is complete and awaiting issuance of building permit.
- Budget and schedule on track.



Project Site Plan - R.C. Talmeley Elementary