

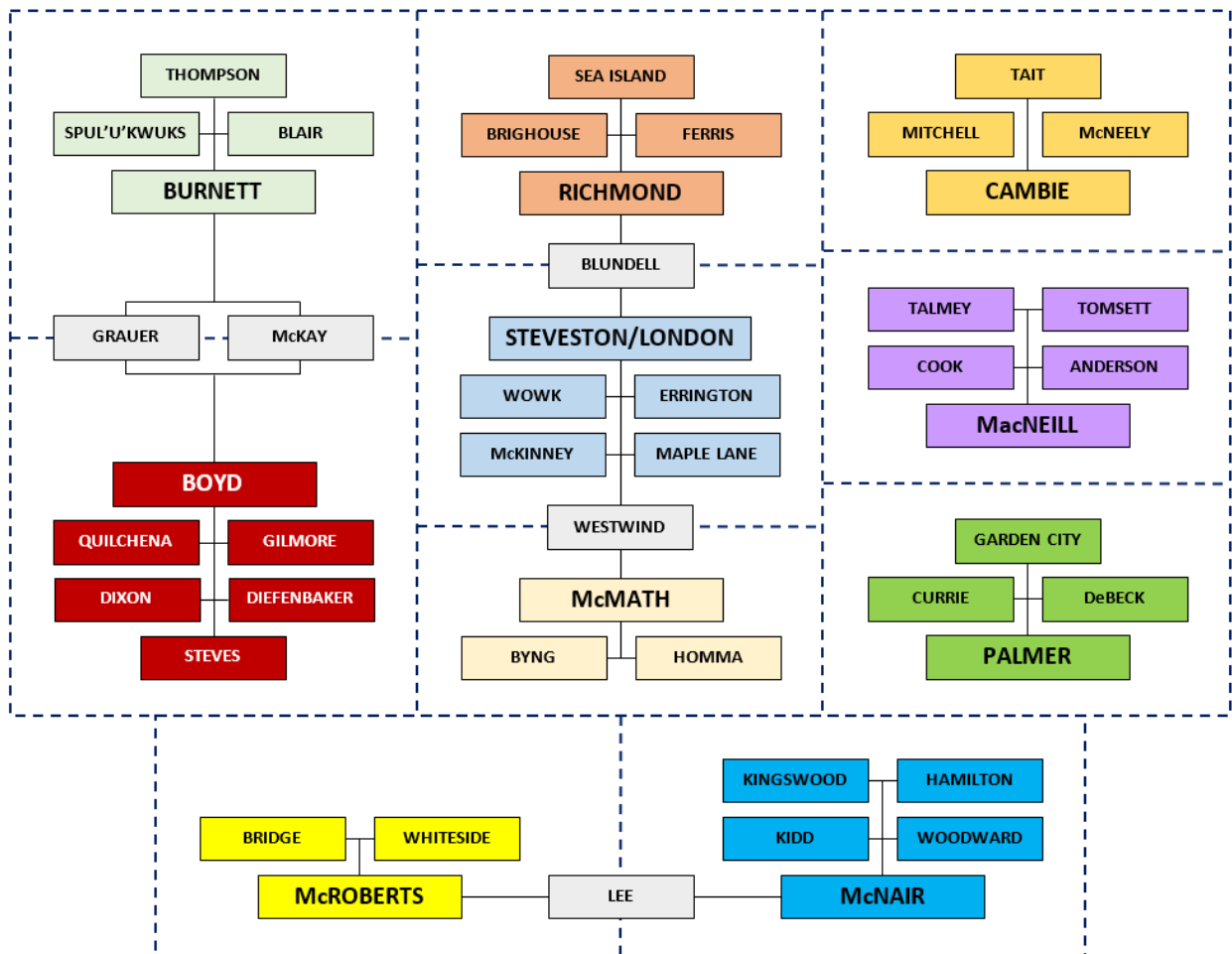
APPENDIX D

Families of Schools and Split Feeder Catchment Analysis

Richmond School District – Current Families of Schools

A family of schools includes a secondary school and its feeder elementary schools. There are currently ten families of schools in the Richmond School District:

**RICHMOND SCHOOL DISTRICT
CURRENT FAMILIES OF SCHOOLS**



Five elementary school catchments are currently split between more than one secondary school. These include Blundell, Grauer, Lee, McKay, and Westwind.

- Grauer and McKay - both split between Burnett [north portion] and Boyd [south portion] along Blundell Road

- Blundell - split between Richmond [north portion] and Steveston-London [south portion] along Blundell Road
- Lee - split between McRoberts [west portion] and McNair [east portion] along Garden City Road
- Westwind - split between McMath [west portion] and Steveston-London [east portion] along Railway Avenue

In addition, two schools are split between more than one of the Community of Schools Regions:

- Blundell Elementary – Split between North Central [north portion] and South Central [south portion] along Blundell Road
- Westwind Elementary – Split between the and West Regions [west portion] and the South Central [east portion]

The following tables provide an analysis of historical split secondary flow information for grade 8-12 regular program students residing in the affected elementary catchments. The tables include a review of the number grade 8-12 regular program students residing in:

- each 'portion' of the elementary catchment attending each of the secondary schools that it feeds into, and
- the elementary catchment as a whole attending each of the secondary schools it feeds into

Blundell Elementary School – Split between Richmond Secondary (north portion)
and Steveston-London Secondary (south portion) along Blundell Road¹

North Portion

	2014	2015	2016	2017	2018
Blundell Elementary Catchment Regular Program Residents - North Portion (feeds Richmond Secondary)					
Attending Richmond Secondary Capture Rate	55 65%	54 61%	57 72%	62 74%	56 70%
Attending Steveston-London Secondary Capture Rate	11 13%	11 12%	8 10%	10 12%	10 13%
Total North Portion Grade 8-12 Regular Program Residents	85	89	79	84	80

South Portion

	2014	2015	2016	2017	2018
Blundell Elementary Catchment Regular Program Residents - South Portion (feeds Steveston-London Secondary)					
Attending Richmond Secondary Capture Rate	14 10%	15 10%	17 12%	13 10%	14 10%
Attending Steveston-London Secondary Capture Rate	100 69%	102 70%	98 70%	102 75%	97 72%
Total South Portion Grade 8-12 Regular Program Residents	145	146	140	136	135

Catchment Total

	2014	2015	2016	2017	2018
Blundell Elementary Catchment Regular Program Residents					
Attending Richmond Secondary Capture Rate	69 30%	69 29%	74 34%	75 34%	70 33%
Attending Steveston-London Secondary Capture Rate	111 48%	113 48%	106 48%	112 51%	107 50%
Total Catchment Grade 8-12 Regular Program Residents	230	235	219	218	214

¹ Blundell Elementary School is physically located in the Steveston-London Secondary School Catchment

Grauer Elementary School – Split between Burnett Secondary (north portion) and Boyd Secondary (south portion) along Blundell Road²

North Portion

	2014	2015	2016	2017	2018
Grauer Elementary Catchment Regular Program Residents - North Portion (feeds Burnett Secondary)					
Attending Boyd Secondary	10	15	16	13	12
Capture Rate	11%	17%	20%	17%	16%
Attending Burnett Secondary	62	63	55	53	58
Capture Rate	71%	71%	70%	70%	77%
Total North Portion Grade 8-12 Regular Program Residents	87	89	79	76	75

South Portion

	2014	2015	2016	2017	2018
Grauer Elementary Catchment Regular Program Residents - South Portion (feeds Boyd Secondary)					
Attending Boyd Secondary	70	72	76	69	77
Capture Rate	56%	57%	61%	58%	56%
Attending Burnett Secondary	31	32	27	29	35
Capture Rate	25%	25%	22%	24%	25%
Total South Portion Grade 8-12 Regular Program Residents	124	127	124	119	138

Catchment Total

	2014	2015	2016	2017	2018
Grauer Elementary Catchment Regular Program Residents					
Attending Boyd Secondary	80	87	92	82	89
Capture Rate	38%	40%	45%	42%	42%
Attending Burnett Secondary	93	95	82	82	93
Capture Rate	44%	44%	40%	42%	44%
Total Catchment Grade 8-12 Regular Program Residents	211	216	203	195	213

² Grauer Elementary School is physically located in the Boyd Secondary School Catchment

Lee Elementary School – Split between McRoberts Secondary (west portion) and McNair Secondary (east portion) along Garden City Road³

West Portion

	2014	2015	2016	2017	2018
Lee Elementary Catchment Regular Program Residents - West Portion (feeds McRoberts Secondary)					
Attending McRoberts Secondary Capture Rate	67 56%	73 67%	71 62%	68 62%	69 70%
Attending McNair Secondary Capture Rate	13 11%	7 6%	7 6%	9 8%	9 9%
Total West Portion Grade 8-12 Regular Program Residents	119	109	114	109	99

East Portion

	2014	2015	2016	2017	2018
Lee Elementary Catchment Regular Program Residents - East Portion (feeds McNair Secondary)					
Attending McRoberts Secondary Capture Rate	21 11%	25 14%	28 17%	24 16%	35 22%
Attending McNair Secondary Capture Rate	119 63%	103 58%	93 56%	82 56%	87 55%
Total East Portion Grade 8-12 Regular Program Residents	189	177	167	147	158

Catchment Total

	2014	2015	2016	2017	2018
Lee Elementary Catchment Regular Program Residents					
Attending McRoberts Secondary Capture Rate	88 29%	98 34%	99 35%	92 36%	104 40%
Attending McNair Secondary Capture Rate	132 43%	110 38%	100 36%	91 36%	96 37%
Total Catchment Grade 8-12 Regular Program Residents	308	286	281	256	257

³ Lee Elementary School is physically located in the McNair Secondary School Catchment

McKay Elementary School – Split between Burnett Secondary (north portion) and Boyd Secondary (south portion) along Blundell Road⁴

North Portion

	2014	2015	2016	2017	2018
McKay Elementary Catchment Regular Program Residents - North Portion (feeds Burnett Secondary)					
Attending Boyd Secondary	4	3	2	1	1
Capture Rate	3%	2%	2%	1%	1%
Attending Burnett Secondary	122	110	92	95	85
Capture Rate	82%	85%	85%	85%	80%
Total North Portion Grade 8-12 Regular Program Residents	149	129	108	112	106

South Portion

	2014	2015	2016	2017	2018
McKay Elementary Catchment Regular Program Residents - South Portion (feeds Boyd Secondary)					
Attending Boyd Secondary	22	26	24	22	15
Capture Rate	33%	41%	48%	41%	38%
Attending Burnett Secondary	23	15	10	12	11
Capture Rate	35%	23%	20%	22%	28%
Total South Portion Grade 8-12 Regular Program Residents	66	64	50	54	40

Catchment Total

	2014	2015	2016	2017	2018
McKay Elementary Catchment Regular Program Residents					
Attending Boyd Secondary	26	29	26	23	16
Capture Rate	12%	15%	16%	14%	11%
Attending Burnett Secondary	145	125	102	107	96
Capture Rate	67%	65%	65%	64%	66%
Total Catchment Grade 8-12 Regular Program Residents	215	193	158	166	146

⁴ McKay Elementary School is physically located in the Burnett Secondary School Catchment

Westwind Elementary School – Split between McMath Secondary (west portion) and Steveston-London Secondary (east portion) along Railway Avenue⁵

West Portion

	2014	2015	2016	2017	2018
Westwind Elementary Catchment Regular Program Residents - West Portion (feeds McMath Secondary)					
Attending McMath Secondary	139	129	133	126	136
Capture Rate	89%	80%	83%	85%	88%
Attending Steveston-London Secondary	8	9	10	7	10
Capture Rate	5%	6%	6%	5%	6%
Total West Portion Grade 8-12 Regular Program Residents	157	161	161	148	154

East Portion

	2014	2015	2016	2017	2018
Westwind Elementary Catchment Regular Program Residents - East Portion (feeds Steveston-London Secondary)					
Attending McMath Secondary	57	61	67	58	54
Capture Rate	42%	42%	44%	38%	37%
Attending Steveston-London Secondary	73	75	75	84	83
Capture Rate	54%	52%	50%	55%	57%
Total East Portion Grade 8-12 Regular Program Residents	135	145	151	152	146

Catchment Total

	2014	2015	2016	2017	2018
Westwind Elementary Catchment Regular Program Residents					
Attending McMath Secondary	196	190	200	184	190
Capture Rate	67%	62%	64%	61%	63%
Attending Steveston-London Secondary	81	84	85	91	93
Capture Rate	28%	27%	27%	30%	31%
Total Catchment Grade 8-12 Regular Program Residents	292	306	312	300	300

⁵ Westwind Elementary School is physically located in the Steveston-London Secondary School Catchment