

NO.	DATE	REVISION	DRAWN

Notes:

Consultant

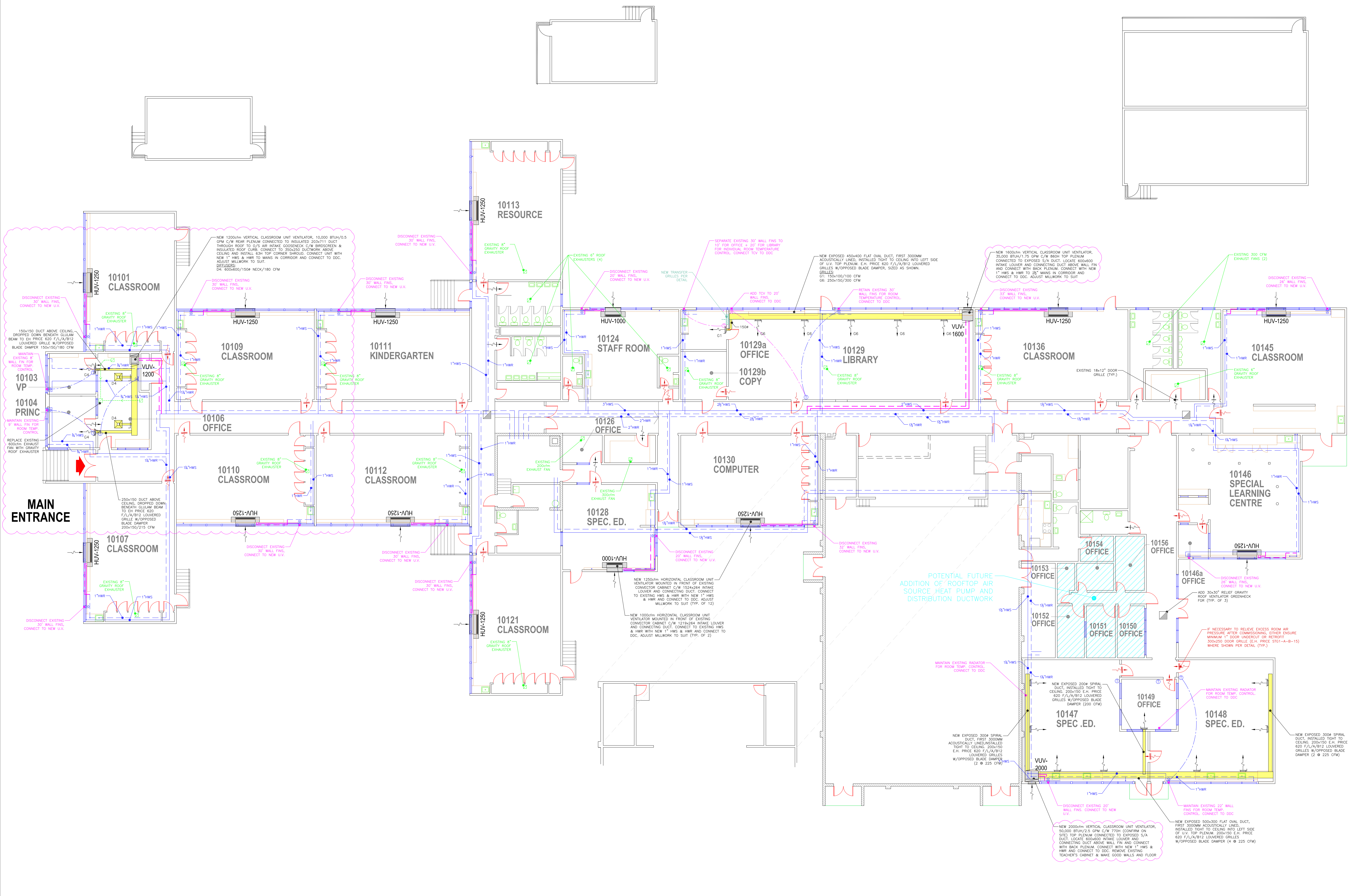
RICHMOND
SCHOOL DISTRICT NO. 38

School Board Office Facilities Services
7811 Granville Avenue 5200 River Road
Richmond BC V6V3A3 Richmond BC V7C1A4
Tel. 604-668-6000 Tel. 604-668-7828

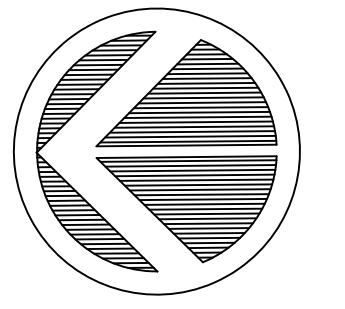
Project Title
BLUNDELL
ELEMENTARY

Drawing Title
FLOOR
PLAN

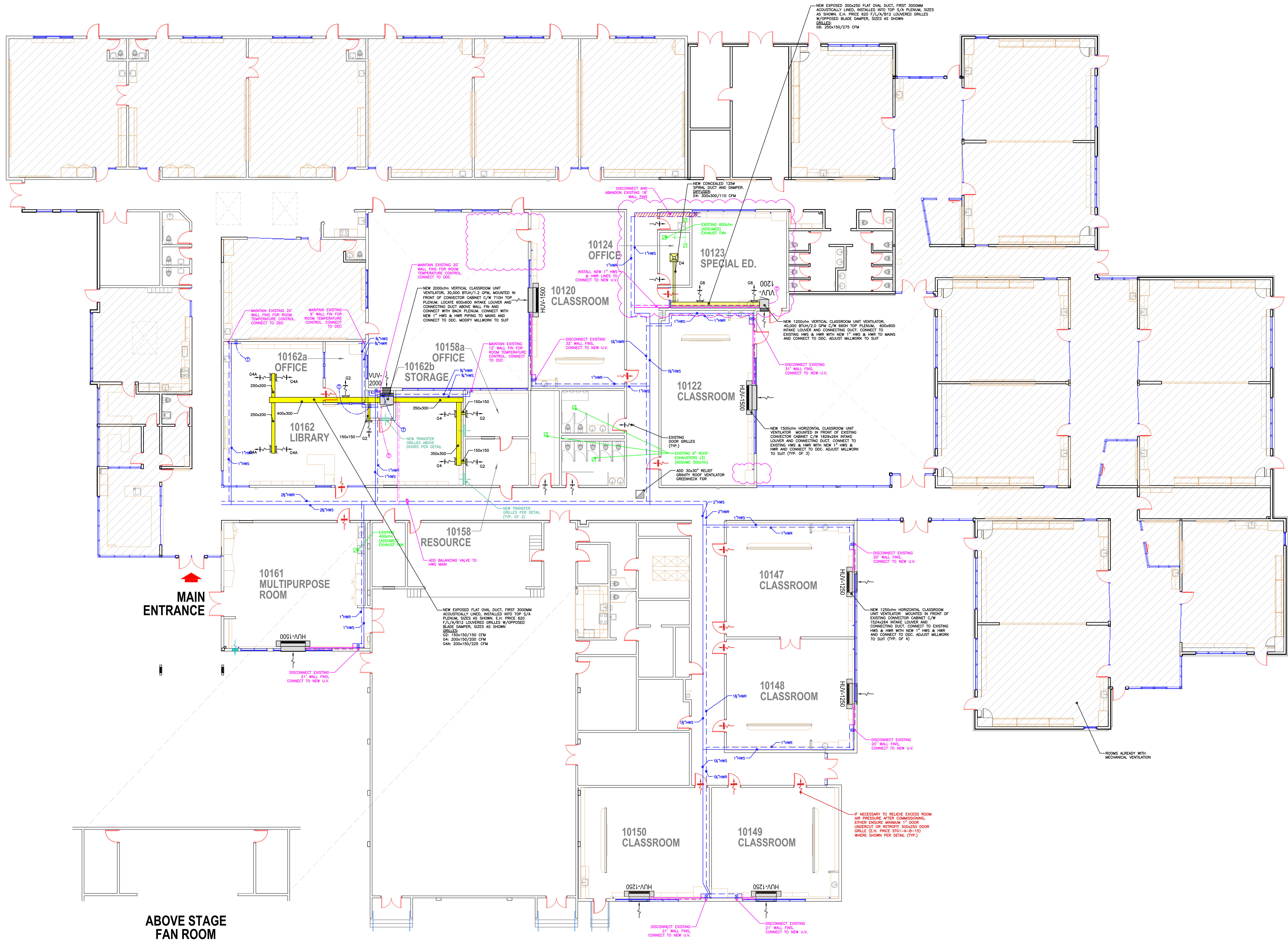
Project No. 210-01	Drawing No. A-1
Scale	of
Date 02 JAN 2023	
Drawn FJG	



Notes:



NO.	DATE	REVISION	DRAWN



Notes:

Consultant

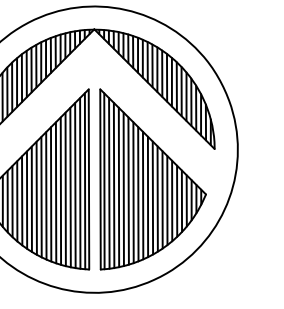
RICHMOND
SCHOOL DISTRICT NO. 38

School Board Office	Facilities Services
7811 Granville Avenue	5200 River Road
Richmond BC V6V3A3	Richmond BC V7C1A4
Tel. 604-668-6000	Tel. 604-668-7828

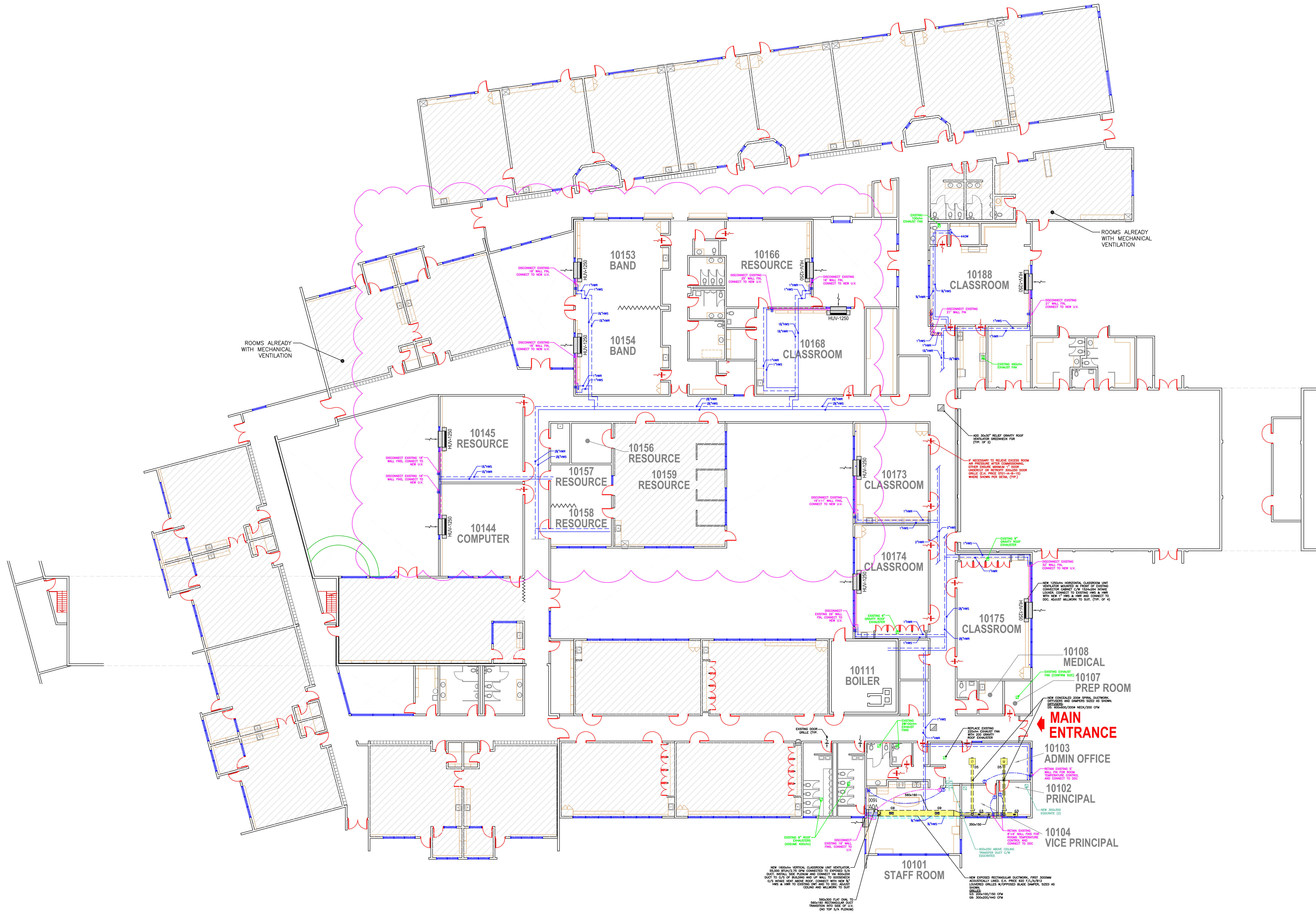
Project Title
WILLIAM COOK
ELEMENTARY

Drawing Title
FLOOR
PLAN

Project No.	Drawing No.
250-01	A-1
Scale	of
Date 05 DEC 2022	
Drawn FJG	



NO.	DATE	REVISION	DRAWN



Notes:

Consultant

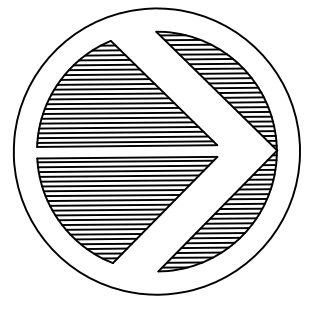
RICHMOND
SCHOOL DISTRICT NO. 38

School Board Office Facilities Services
7811 Gramville Avenue 5200 River Road
Richmond SC 29154 Richmond SC 29214
Tel. 604-668-6000 Tel. 604-668-7828

Project Title
W.D. FERRIS
ELEMENTARY

Drawing Title
FLOOR PLAN

Project No. 320-01	Drawing No. A-1
Scale Date 13 NOV 2022	Drawn FJC



NO.	DATE	REVISION	DRAWN

Notes:

Consultant

RICHMOND
SCHOOL DISTRICT NO. 38

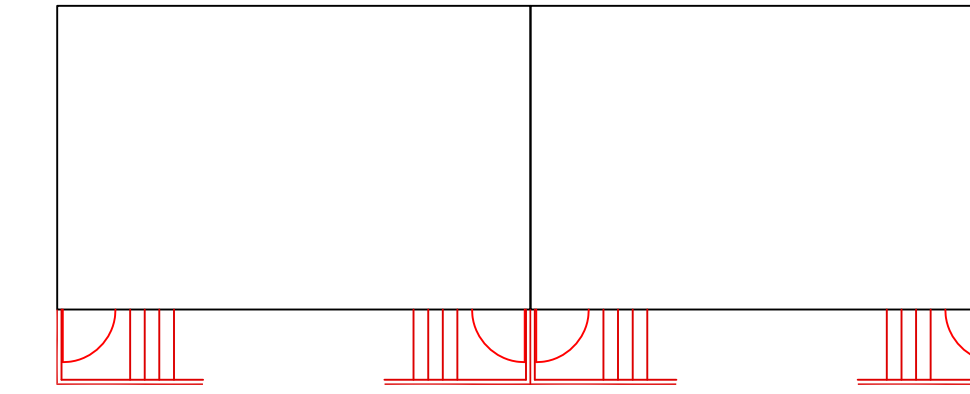
School Board Office Facilities
7811 Granville Avenue 5200 River Road
Richmond BC V6V3A3 Richmond BC V7C1A4
Tel. 604-668-6000 Tel. 604-668-7828

Project Title
GARDEN CITY
ELEMENTARY

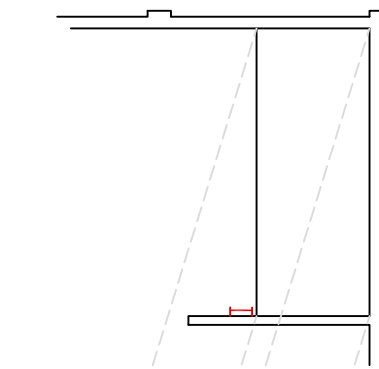
Drawing Title
FLOOR
PLAN

Project No. 330-01	Drawing No. A-1
Scale NTS	of
Date 26 OCT 2022	
Drawn FJG	

PORTABLES



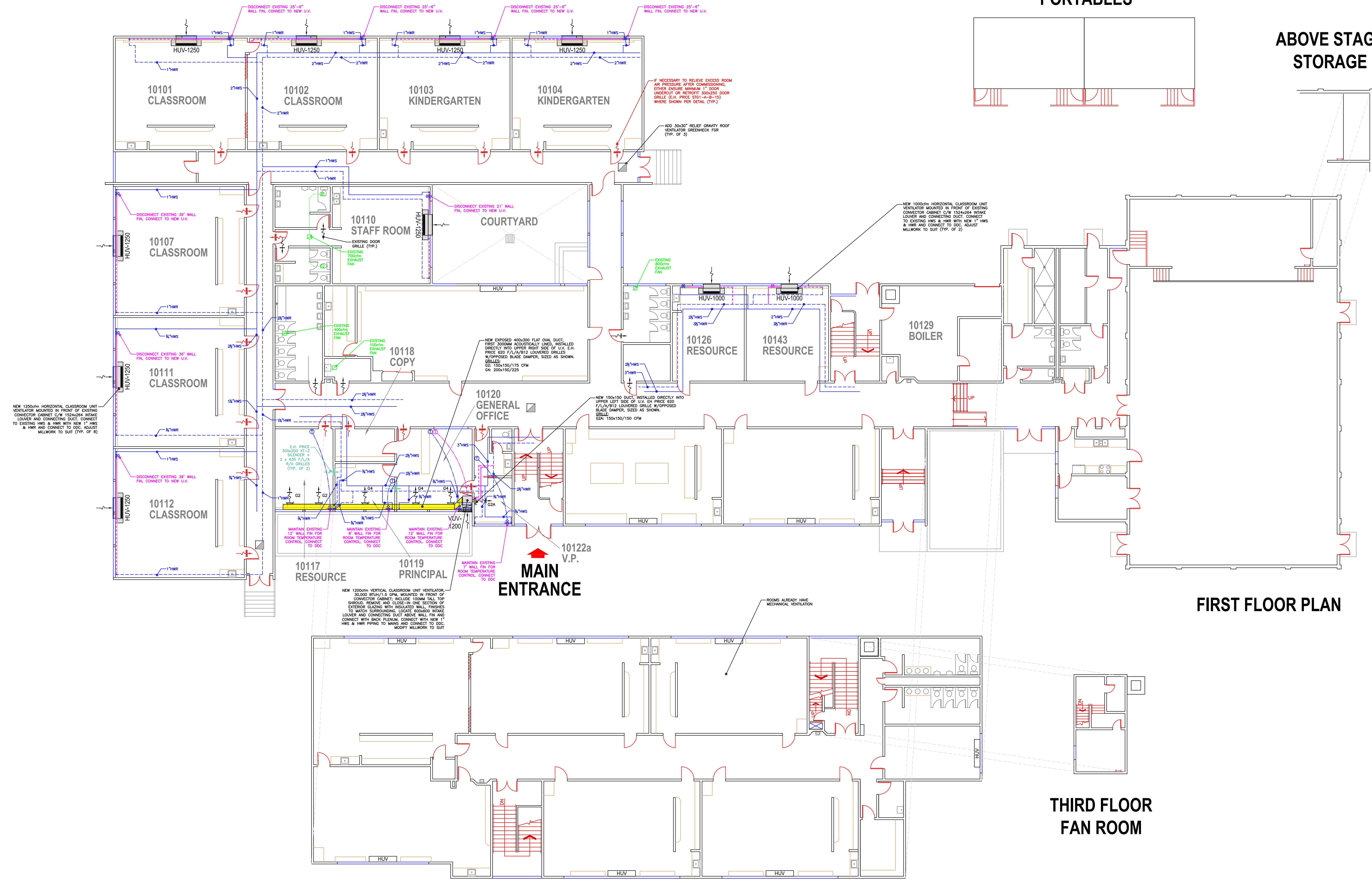
ABOVE STAGE STORAGE



FIRST FLOOR PLAN

THIRD FLOOR FAN ROOM

SECOND FLOOR PLAN



IF NECESSARY TO RELIEVE EXCESS ROOM AIR PRESSURE AFTER COMMISSIONING, EITHER ENSURE MINIMUM 1" DOOR UNDERCUT OR RETROFIT 300x200 DOOR GRILLE (E.H. PRICE STG1-A-B-15) WHERE SHOWN PER DETAIL (TYP.)

ADD 30x30" RELIEF GRAVITY ROOF VENTILATOR GREENHECK FOR (TYP. OF 3)

NEW 1000cfm HORIZONTAL CLASSROOM UNIT VENTILATOR MOUNTED IN FRONT OF EXISTING CONVECTOR CABINET C/W 1524x254 INTAKE LOWER AND CONNECTING DUCT. CONNECT TO EXISTING HWS & HWR WITH NEW 1" HWS & HWR AND CONNECT TO DCC. ADJUST MILLWORK TO SUIT (TYP. OF 2)

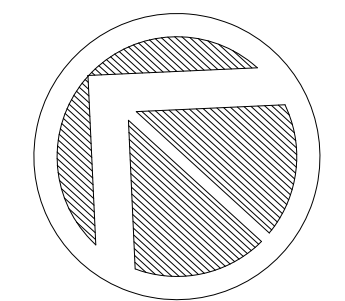
NEW EXPOSED 400x300 FLAT OVAL DUCT FIRST 3000MM ACCELSIALLY LINED, INSTALLED DIRECTLY INTO UPPER RIGHT SIDE OF U.V. E.H. PRICE 400 F/L/A/B12 LOUVERED GRILLES W/OPPROSED BLADE DAMPER, SIZED AS SHOWN. SIZES: G2: 150x150/175 CFM G4: 200x150/225

NEW 150x150 DUCT, INSTALLED DIRECTLY INTO UPPER LEFT SIDE OF U.V. E.H. PRICE 400 F/L/A/B12 LOUVERED GRILLE W/OPPROSED BLADE DAMPER, SIZED AS SHOWN. SIZES: 150x150/150 CFM

NEW 1250cfm HORIZONTAL CLASSROOM UNIT VENTILATOR MOUNTED IN FRONT OF EXISTING CONVECTOR CABINET C/W 1524x254 INTAKE LOWER AND CONNECTING DUCT. CONNECT TO EXISTING HWS & HWR WITH NEW 1" HWS & HWR AND CONNECT TO DCC. ADJUST MILLWORK TO SUIT (TYP. OF 8)

NEW 1200cfm VERTICAL CLASSROOM UNIT VENTILATOR 30000 BTU/H/1.2 GPM, MOUNTED IN FRONT OF CONVECTOR CABINET. INCLUDE 100MM TALL TOP SPOOLS, REMOVE AND REUSE IN ONE SECTION OF EXTERIOR GLAZING WITH INSULATED WALL. FINISHES TO MATCH SURROUNDING LOCALS. EXPOSED FRAMES LOWER AND CONNECTING DUCT ABOVE WALL FIN AND CONNECT WITH BACK FRAMING. CONNECT WITH NEW 1" HWS & HWR PIPING TO MAINS AND CONNECT TO DCC. MODIFY MILLWORK TO SUIT

ROOMS ALREADY HAVE MECHANICAL VENTILATION



NO.	DATE	REVISION	DRAWN

Notes:

Consultant

RICHMOND
SCHOOL DISTRICT NO. 38

School Board Office
7811 Granville Avenue
Richmond BC V6V3A3
Tel. 604-668-6000

Facilities Services
5200 River Road
Richmond BC V7C1A4
Tel. 604-668-7828

Project Title
**JAMES GILMORE
ELEMENTARY**

Drawing Title
**FLOOR
PLAN**

Project No.
360-01

Scale
NTS

Date
28 DEC 2022

Drawn
FJG

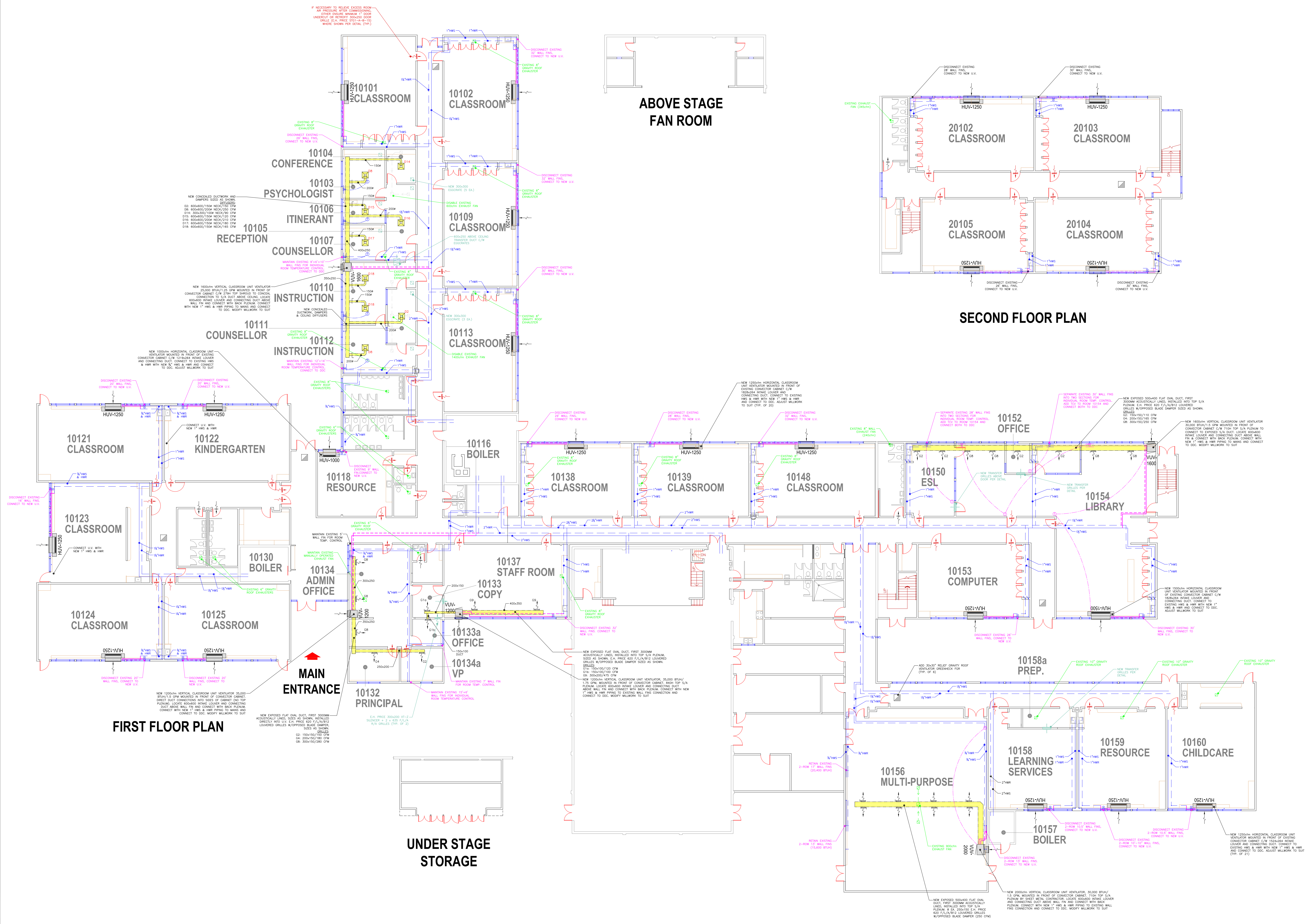
Drawing No.
A-1

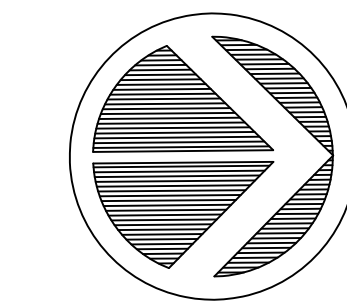
**ABOVE STAGE
FAN ROOM**

SECOND FLOOR PLAN

FIRST FLOOR PLAN

**UNDER STAGE
STORAGE**





NO.	DATE	REVISION	DRAWN

Notes:

Consultant

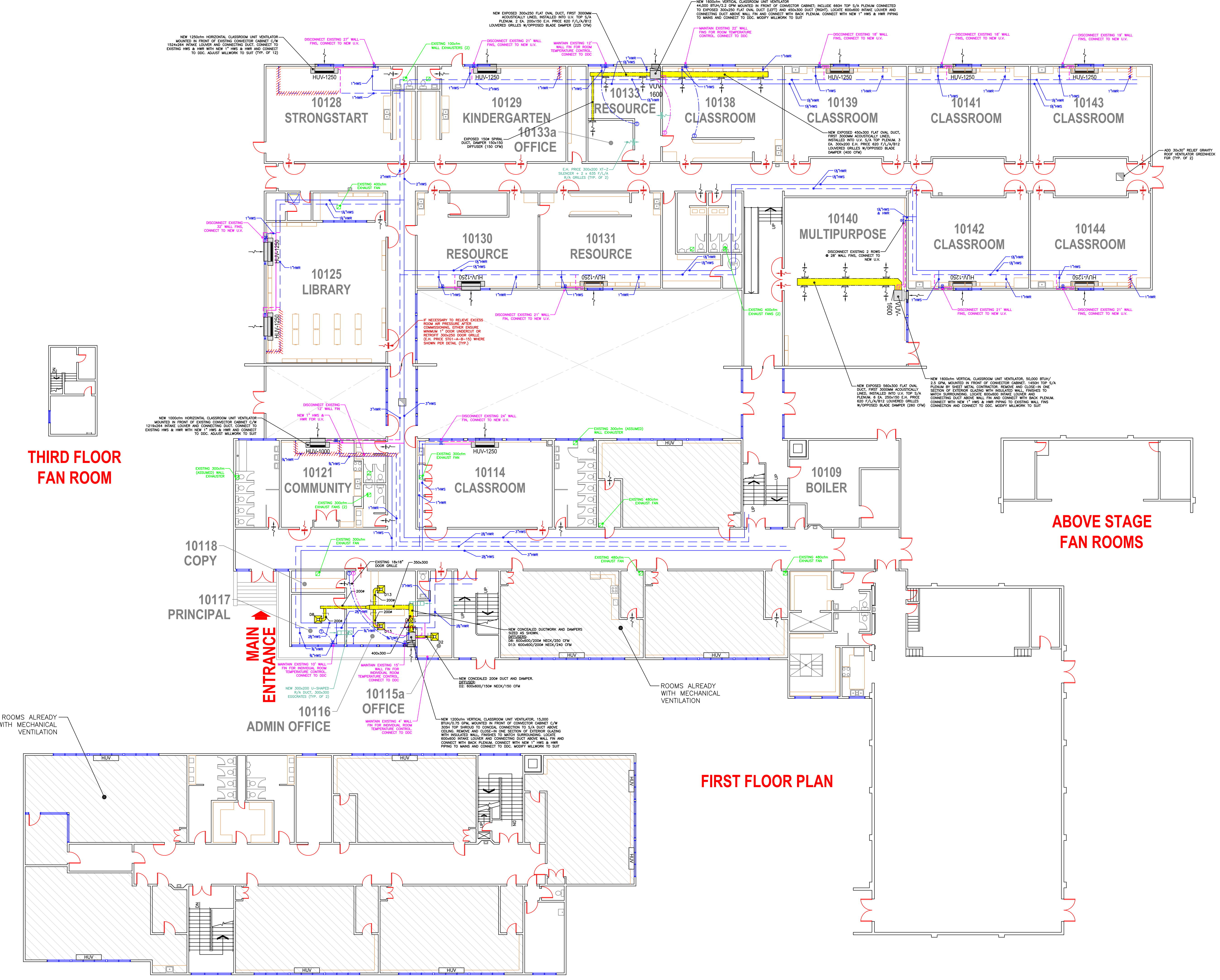
RICHMOND
SCHOOL DISTRICT NO. 38

School Board Office Facilities
7811 Granville Avenue 5200 River Road
Richmond BC V6V3A3 Richmond BC V7C1A4
Tel. 604-668-6000 Tel. 604-668-7828

Project Title
R.M. GRAUER
ELEMENTARY

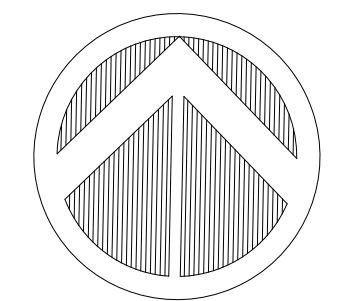
Drawing Title
FLOOR
PLAN

Project No. 370-01	Drawing No. A-1
Scale NTS	of
Date 07 OCT 2022	
Drawn FJG	

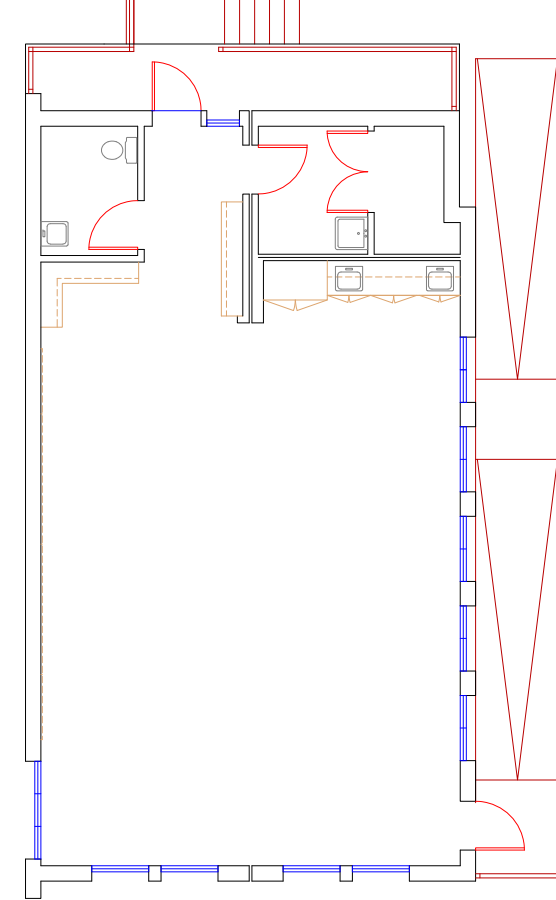
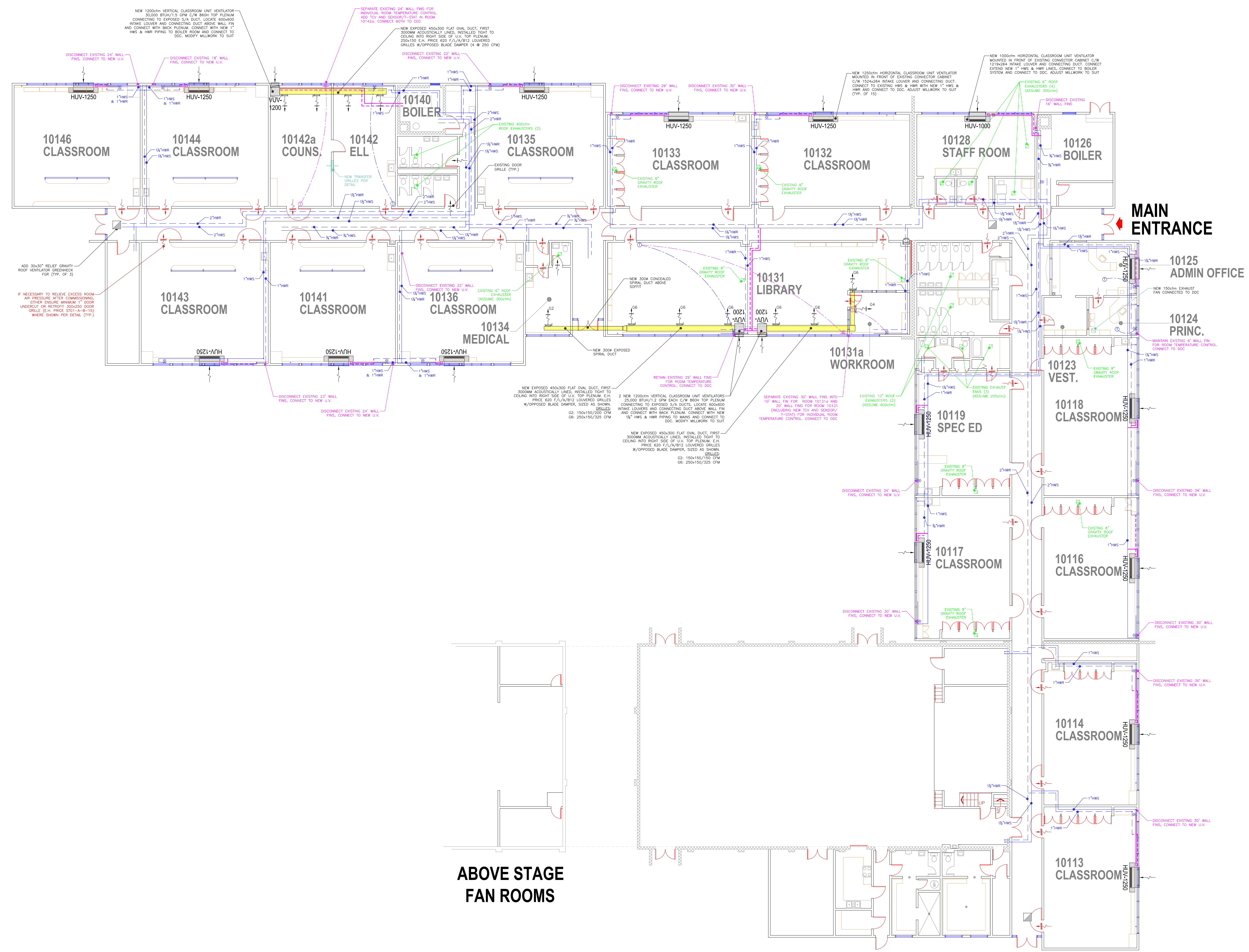


FIRST FLOOR PLAN

SECOND FLOOR PLAN



NO.	DATE	REVISION	DRAWN



MODULAR LEARNING CENTRE

ABOVE STAGE FAN ROOMS

Notes:

Consultant

RICHMOND
SCHOOL DISTRICT NO. 38

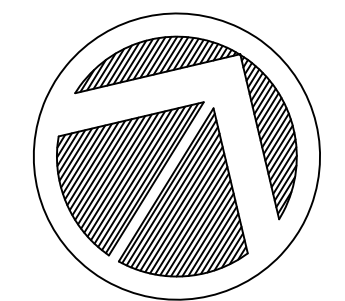
School Board Office
7811 Granville Avenue
Richmond BC V6V3A3
Tel. 604-668-6000

Facilities Services
5200 River Road
Richmond BC V7C1A4
Tel. 604-668-7828

Project Title
THOMAS KIDD
ELEMENTARY

Drawing Title
FLOOR
PLAN

Project No. 400-01	Drawing No. A-1
Scale NTS	of
Date 15 DEC 2022	
Drawn FJG	



NO.	DATE	REVISION	DRAWN

Notes:

Consultant

RICHMOND
SCHOOL DISTRICT NO.38

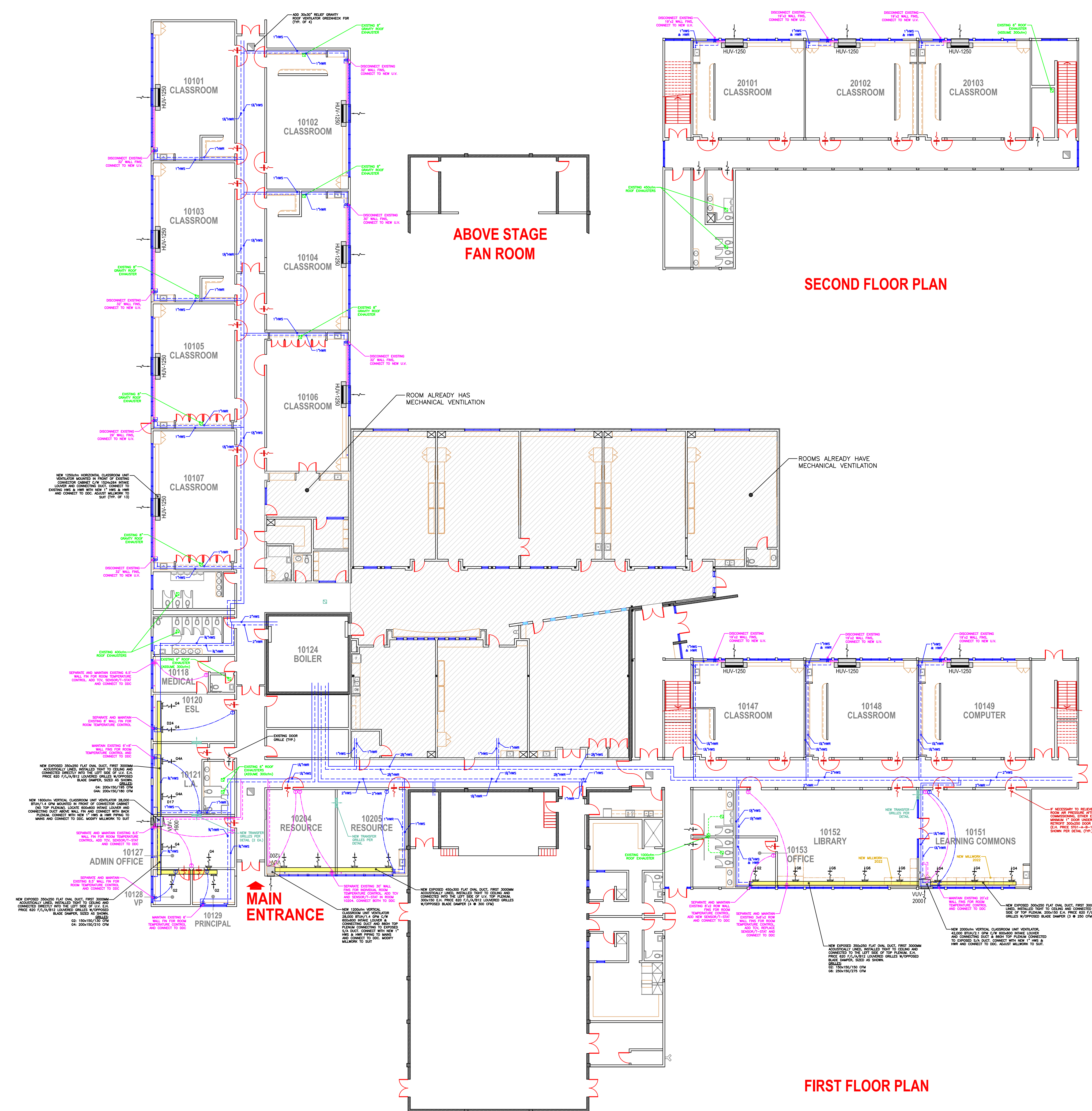
School Board Office
7811 Granville Avenue
Richmond BC V6V3A3
Tel. 604-668-6000

Facilities Services
5200 River Road
Richmond BC V7C1A4
Tel. 604-668-7828

Project Title
WALTER LEE
ELEMENTARY

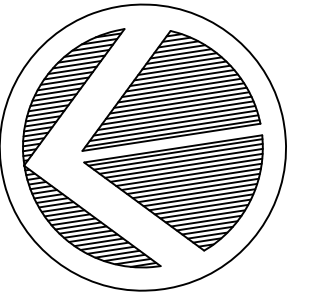
Drawing Title
FLOOR
PLAN

Project No. 430-01	Drawing No. A-1
Scale NTS	of
Date 05 OCT 2022	
Drawn FJG	



SECOND FLOOR PLAN

FIRST FLOOR PLAN



NO.	DATE	REVISION	DRAWN

Notes:

Consultant

RICHMOND
SCHOOL DISTRICT NO. 38

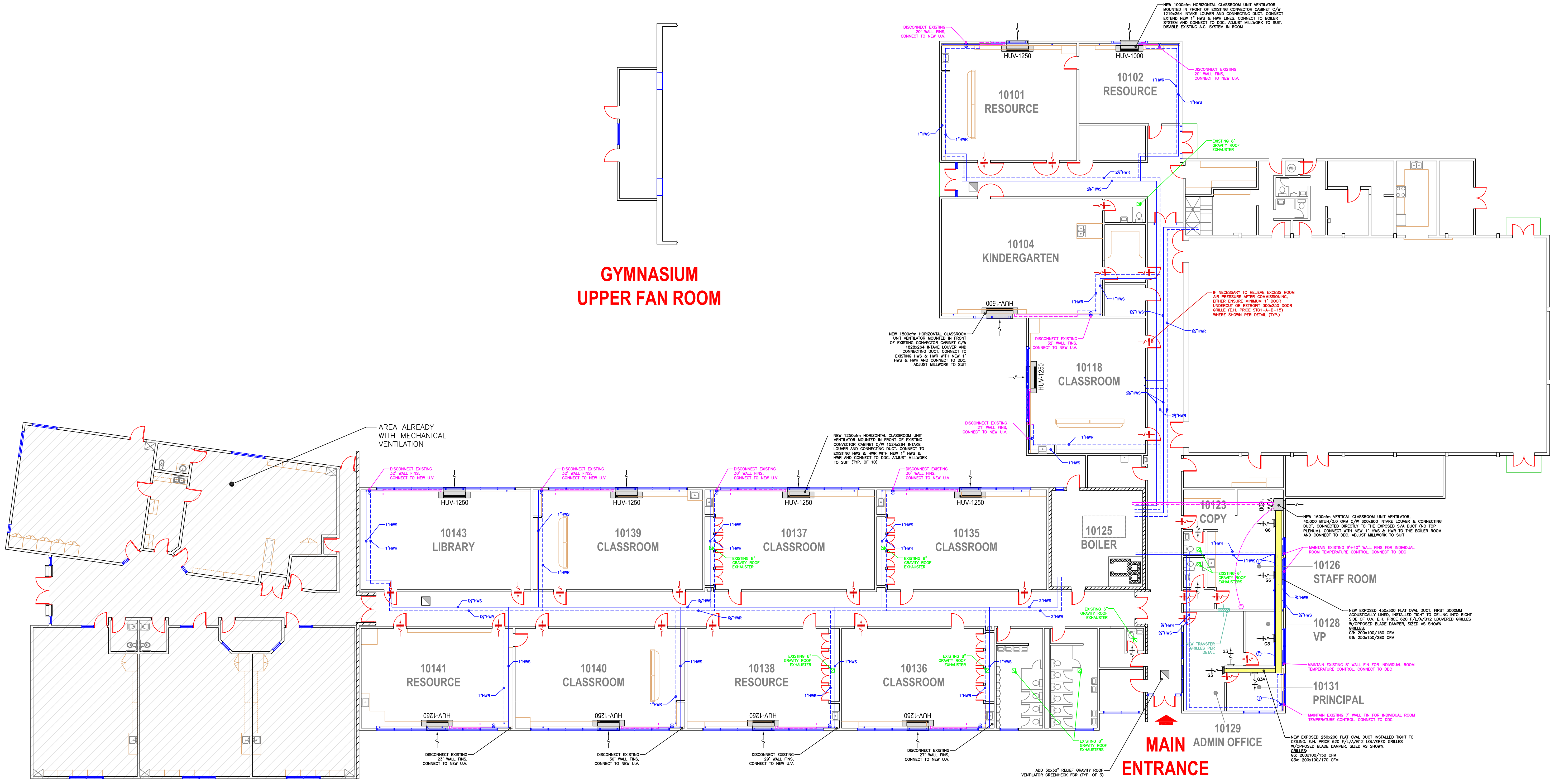
School Board Office Facilities Services
7811 Granville Avenue 5200 River Road
Richmond BC V6V3A3 Richmond BC V7C1A4
Tel. 604-668-6000 Tel. 604-668-7828

Project Title
DONALD E. MCKAY
ELEMENTARY

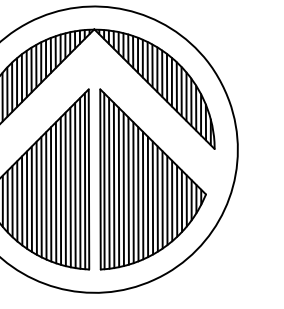
Drawing Title
FLOOR
PLAN

Project No. 450-01	Drawing No. A-1
Scale Date 06 OCT 2022	of
Drawn FJG	

GYMNASIUM UPPER FAN ROOM



MAIN ENTRANCE



NO.	DATE	REVISION	DRAWN

Notes:

Consultant

RICHMOND
SCHOOL DISTRICT NO. 38

School Board Office Facilities Services
7811 Grammie Avenue 5200 River Road
Richmond SC 29154 Richmond SC 29214
Tel. 604-668-6000 Tel. 604-668-7828

Project Title
MITCHELL
ELEMENTARY

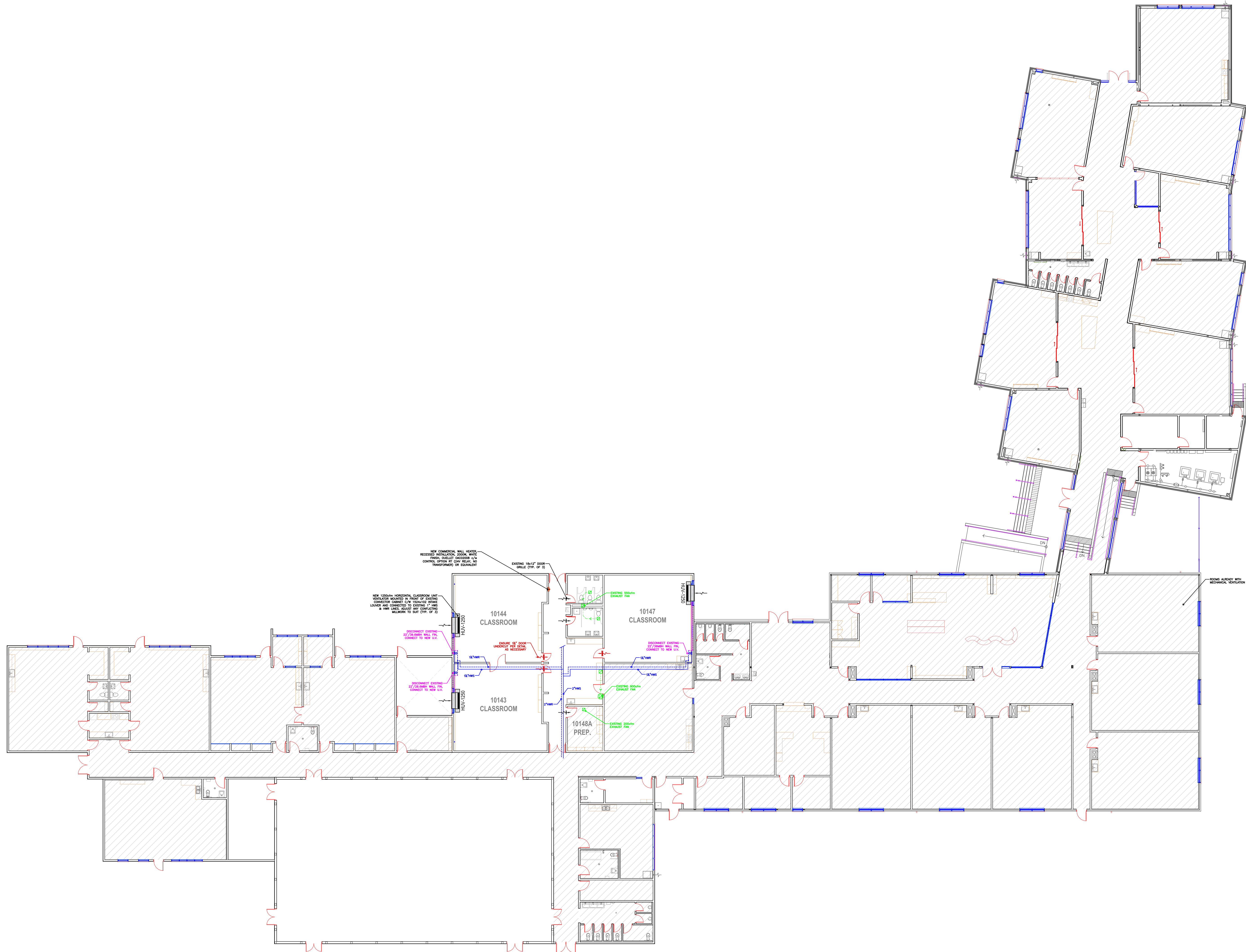
Drawing Title
FLOOR PLAN

Project No.
470-01

Scale NTS
Date 06 MAY 2022
Drawn FJG

Drawing No.
A-1

of



NEW COMMERCIAL WALL HEATER
REQUIRED INSTALLATION. ROOMS WITH
FINISH WALLS TO BE REMOVED. ALL
CONTROL OPTION BY CHY RELAY. NO
TRANSFORMATION OR EQUIVALENT

NEW 1250Watt HORIZONTAL CLASSROOM UNIT
INSTALLATION. INSTALLED IN FRONT OF EXISTING
CONNECTOR CABINET. C/W 153A-103 WIRING
LEADING AND CONNECTED TO EXISTING 1" WIRE
& PER LABEL. REMOVE ANY CONDUITS
UNLAWFUL TO DIST. (TYPE OF 3)

DISCONNECT EXISTING
27" SQUARE WALL FAN
CONNECT TO NEW EX.

DISCONNECT EXISTING
27" SQUARE WALL FAN
CONNECT TO NEW EX.

EXISTING 18x12" DOOR
GRILLE (TYPE OF 3)

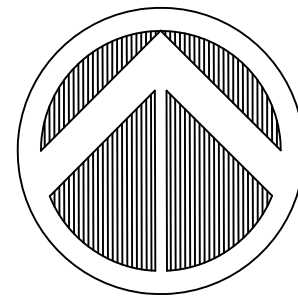
EXISTING 300mm
EXHAUST FAN

EXISTING 300mm
EXHAUST FAN

EXISTING 300mm
EXHAUST FAN

EXISTING 300mm
EXHAUST FAN

ROOMS ALREADY WITH
NETWORK VENTILATION



NO.	DATE	REVISION	DRAWN

Notes:

Consultant:

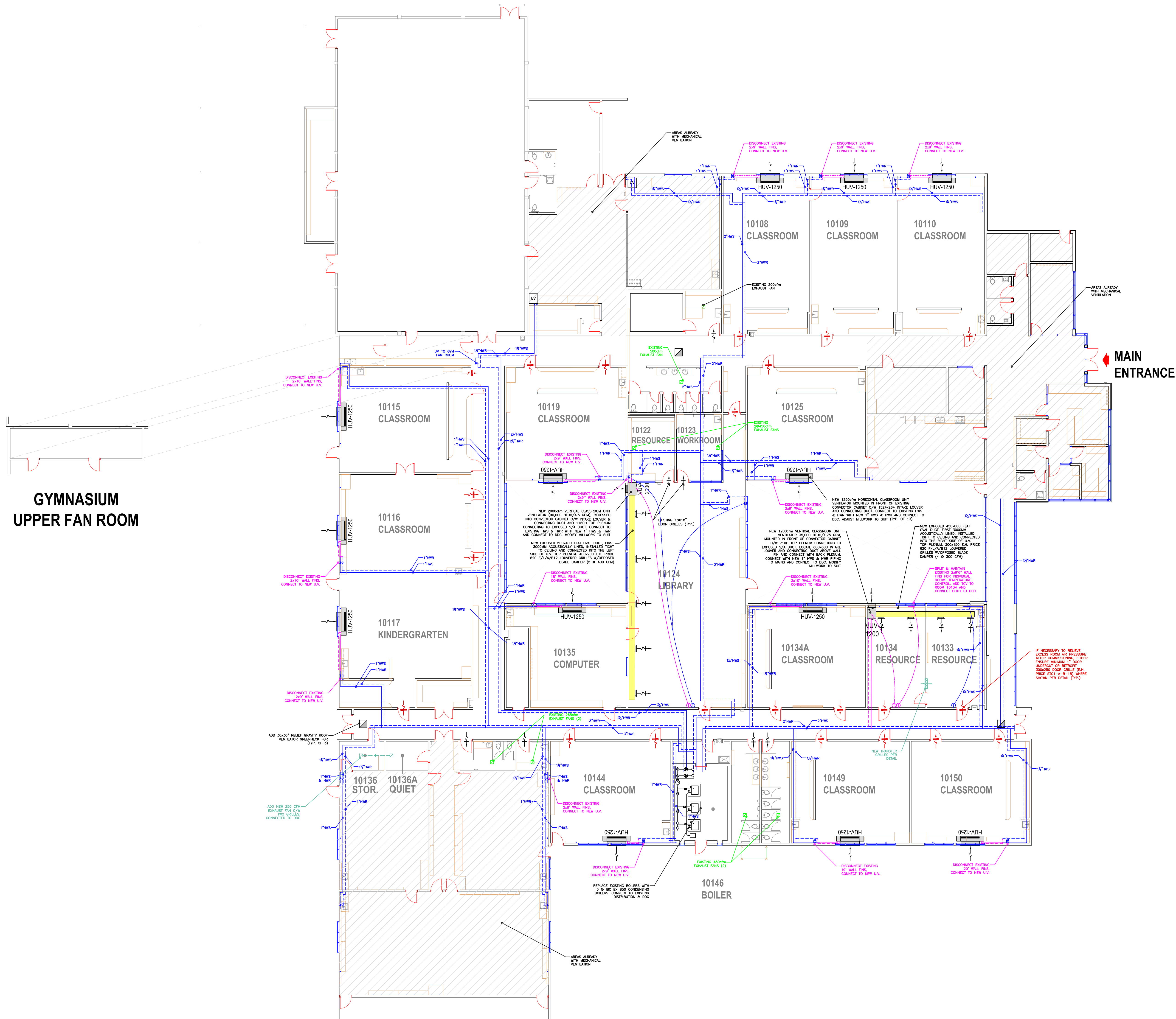
RICHMOND
SCHOOL DISTRICT NO. 38

School Board Office Services
7811 Granville Avenue 5200 River Road
Richmond BC V6V3A3 Richmond BC V7C1A4
Tel. 604-668-6000 Tel. 604-668-7828

Project Title
MANOAH STEVES
ELEMENTARY

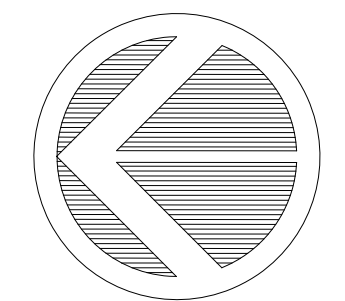
Drawing Title
FLOOR PLAN

Project No. 520-01	Drawing No. A-1
Scale NTS	of
Date 26 OCT 2022	
Drawn FJC	



**GYMNASIUM
UPPER FAN ROOM**

**MAIN
ENTRANCE**



NO.	DATE	REVISION	DRAWN

Notes:

Consultant

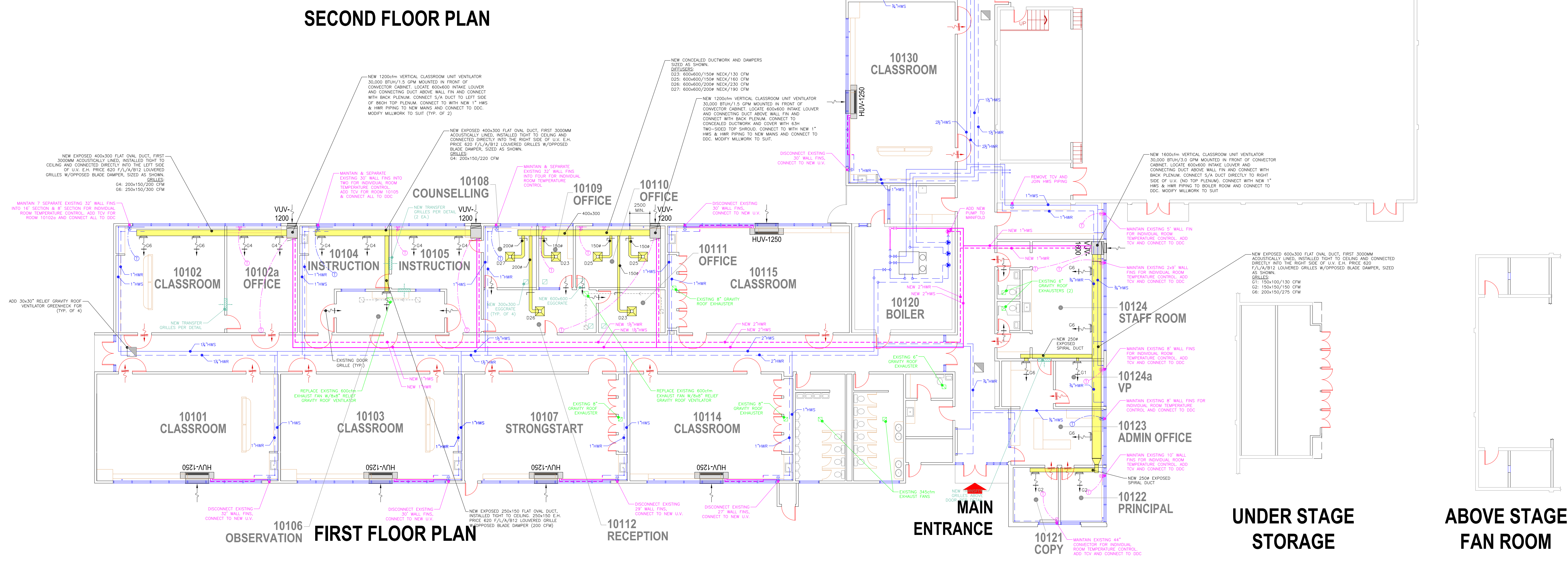
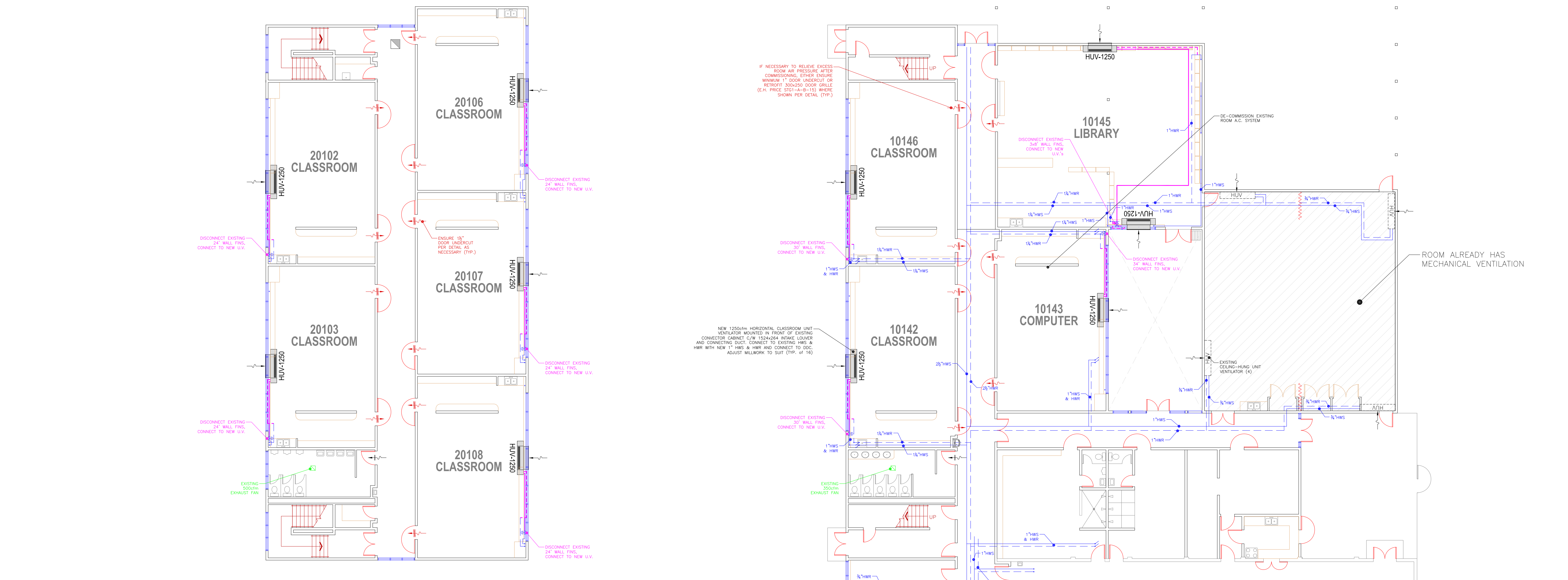
RICHMOND
SCHOOL DISTRICT NO. 38

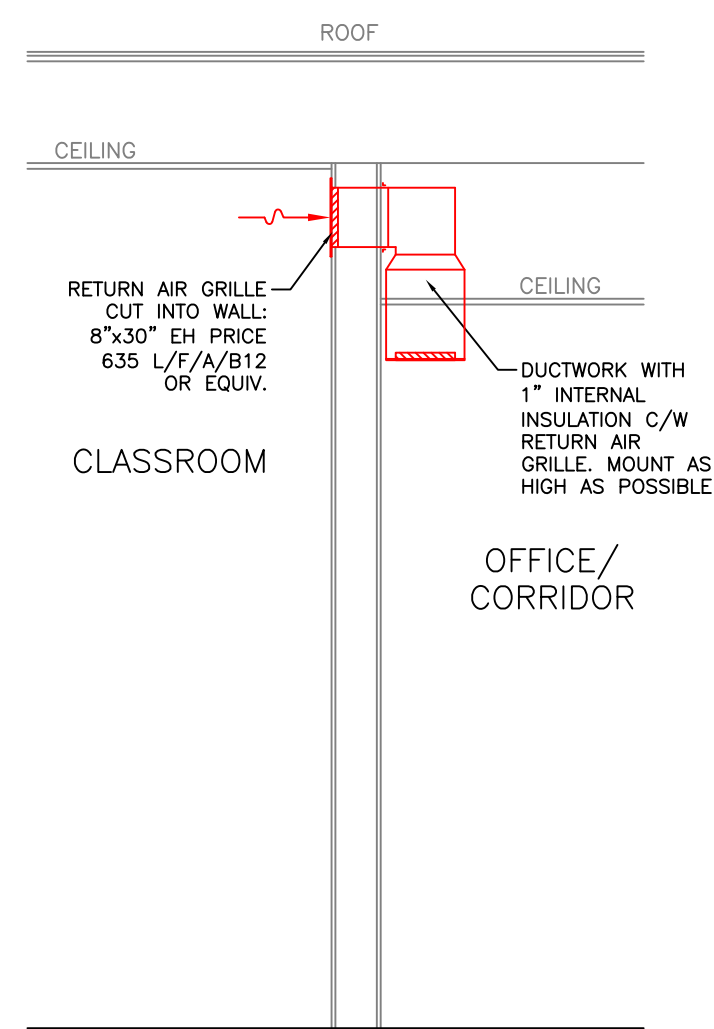
School Board Office Facilities Services
7811 Granville Avenue 5200 River Road
Richmond BC V6V3A3 Richmond BC V7C1A4
Tel. 604-668-6000 Tel. 604-668-7828

Project Title
DANIEL WOODWARD
ELEMENTARY

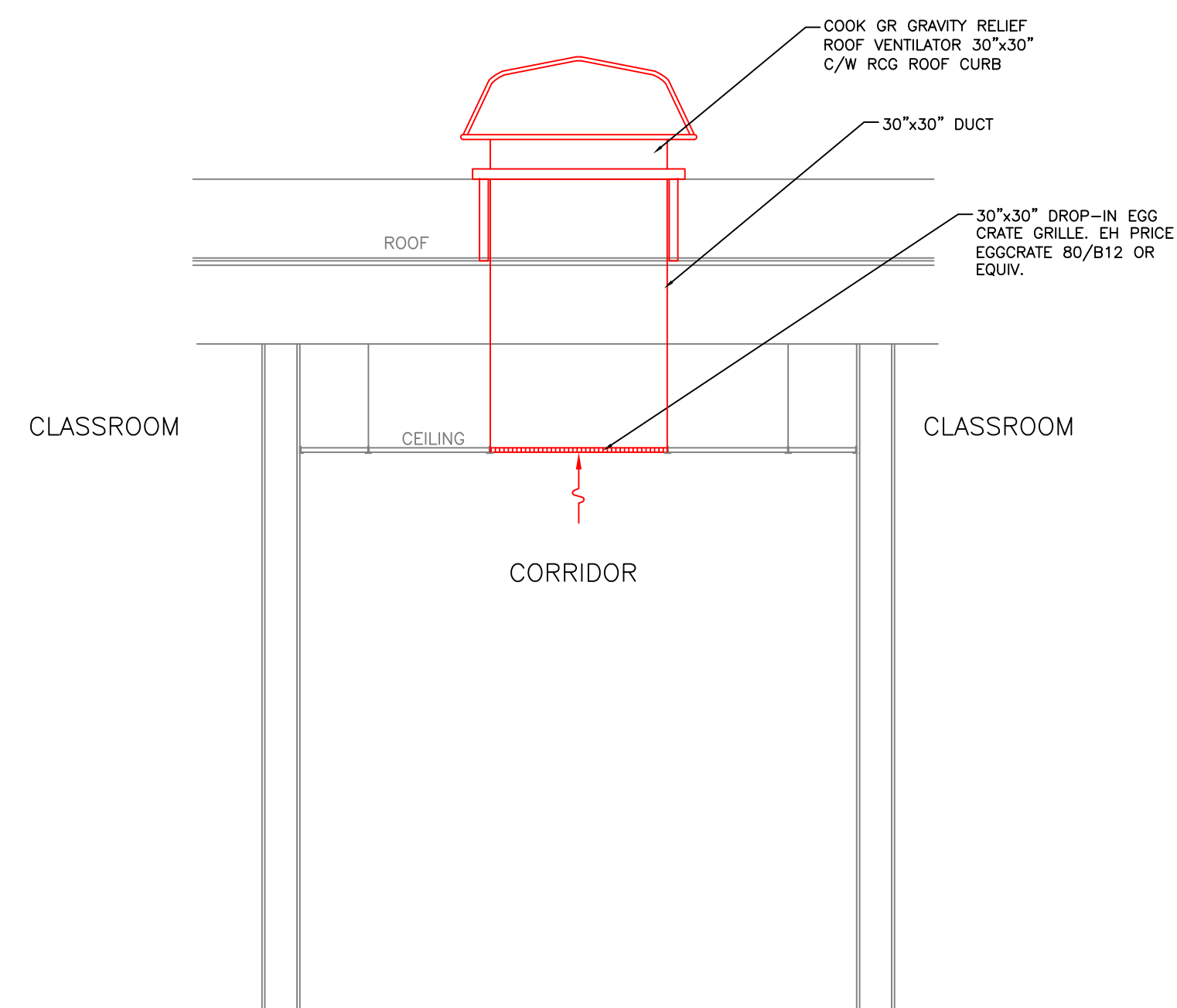
Drawing Title
FLOOR
PLAN

Project No. 580-01	Drawing No. A-1
Scale NTS	
Date 16 DEC 2022	
Drawn FJG	

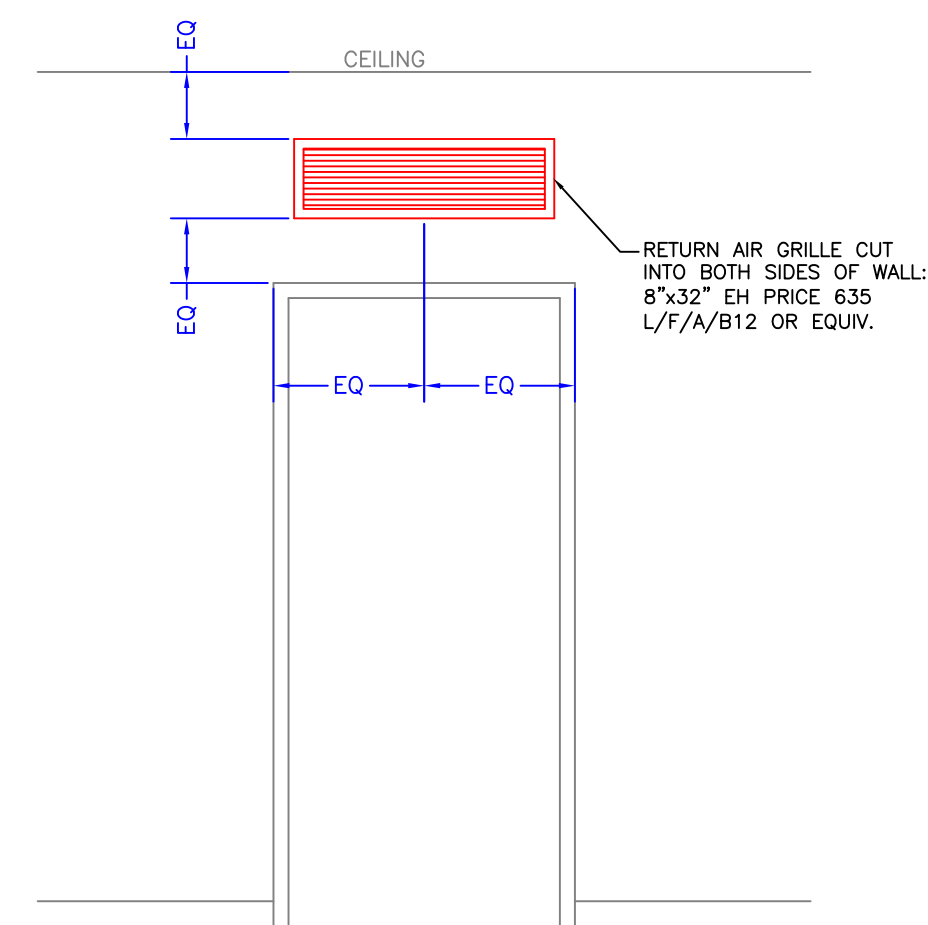




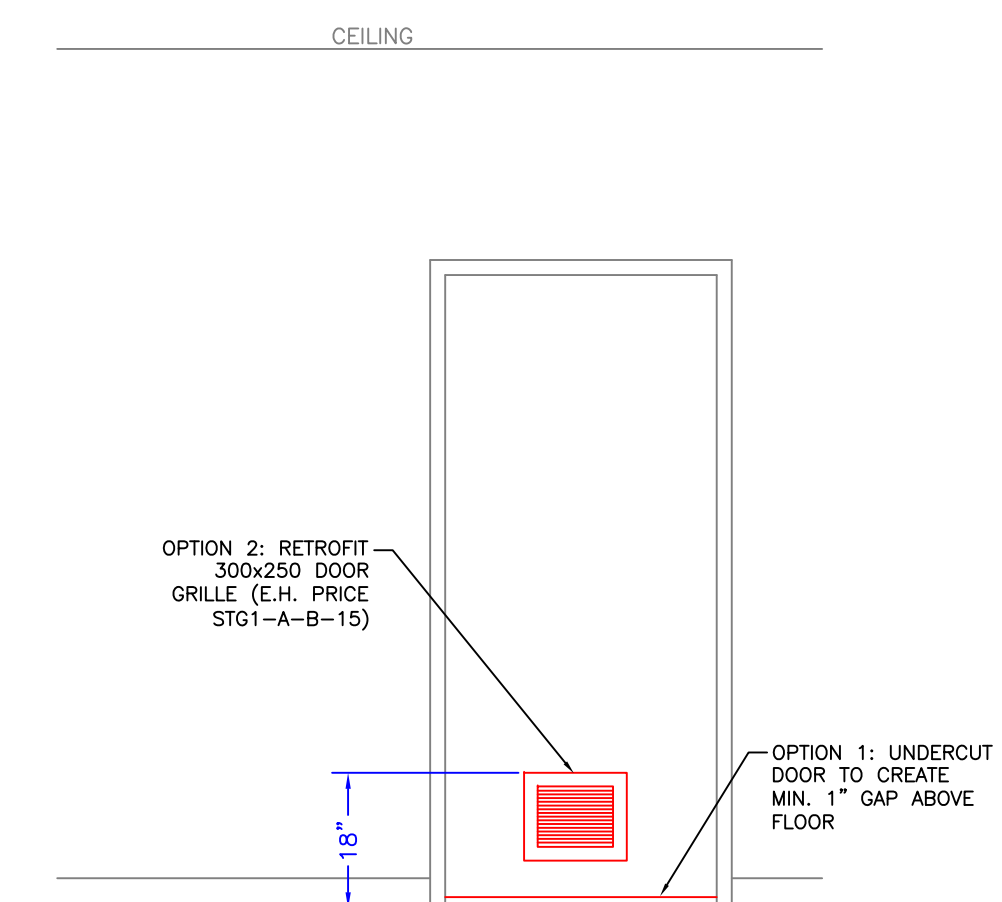
AIR TRANSFER BETWEEN ROOMS DETAIL



CORRIDOR RELIEF AIR DETAIL



RELIEF AIR ABOVE DOOR DETAIL



RELIEF AIR THROUGH DOOR DETAIL

NO.	DATE	REVISION	DRAWN

Notes:

Consultant

RICHMOND
SCHOOL DISTRICT NO.38

School Board Office Facilities Services
7811 Granville Avenue 5200 River Road
Richmond BC V6V3A3 Richmond BC V7C1A4
Tel. 604-668-6000 Tel. 604-668-7828

Project Title
CLASSROOM VENTILATION PROGRAM

Drawing Title
MISCELLANEOUS DETAILS

Project No. SD38-CVP	Drawing No. D-1
Scale	of
Date 03 JAN 2023	
Drawn FJG	