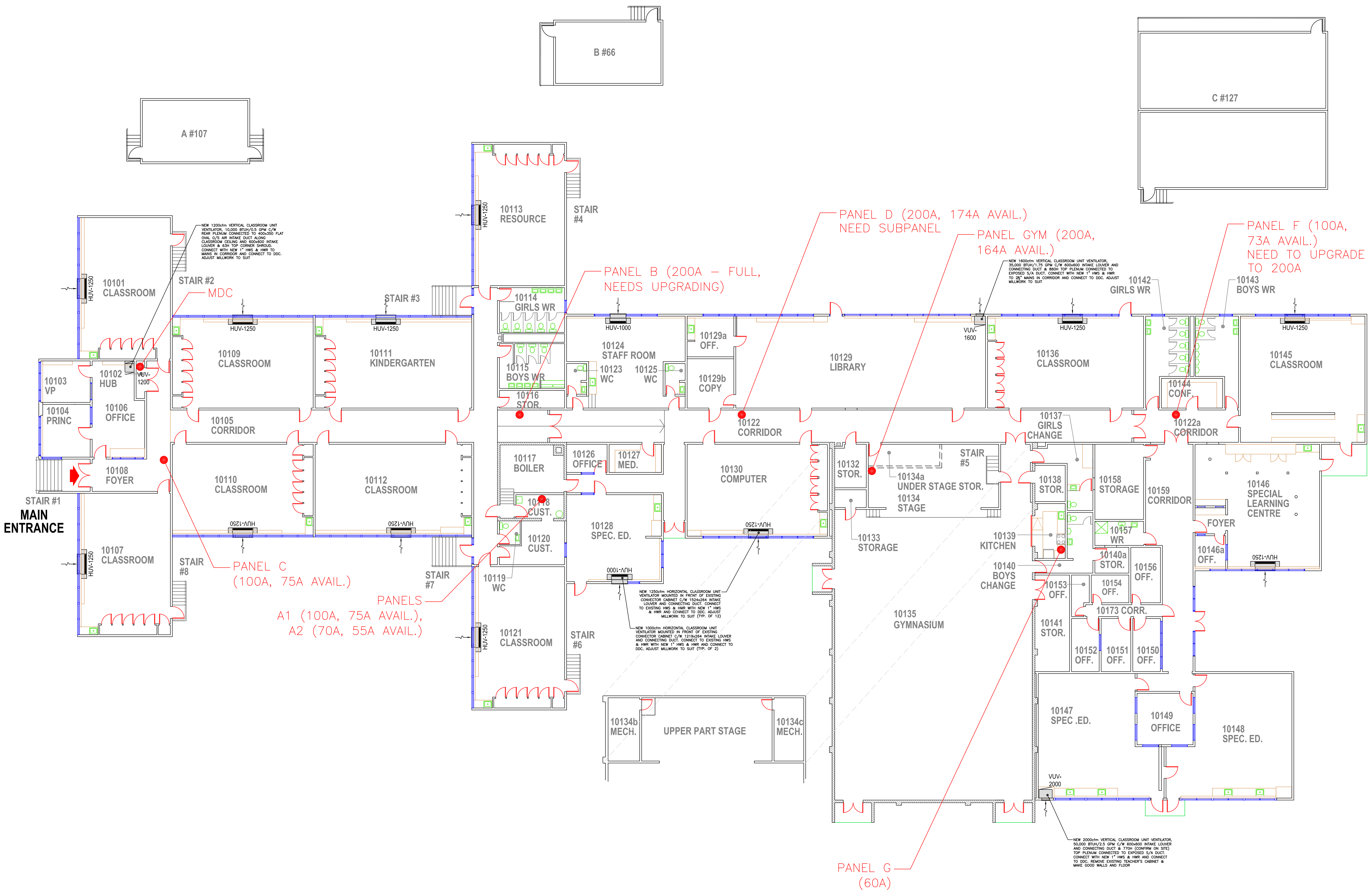


NO.	DATE	REVISION	DRAWN



Notes:

Consultant

RICHMOND
SCHOOL DISTRICT NO. 38

School Board Office Facilities Services
7811 Granville Avenue 5200 River Road
Richmond BC V6V3A3 Richmond BC V7C1A4
Tel. 604-668-6000 Tel. 604-668-7828

Project Title
BLUNDELL
ELEMENTARY

Drawing Title
FLOOR
PLAN

Project No. 210-01	Drawing No. A-1
Scale Date 05 DEC 2022	Drawn FJG



NO.	DATE	REVISION	DRAWN

Notes:

Consultant:

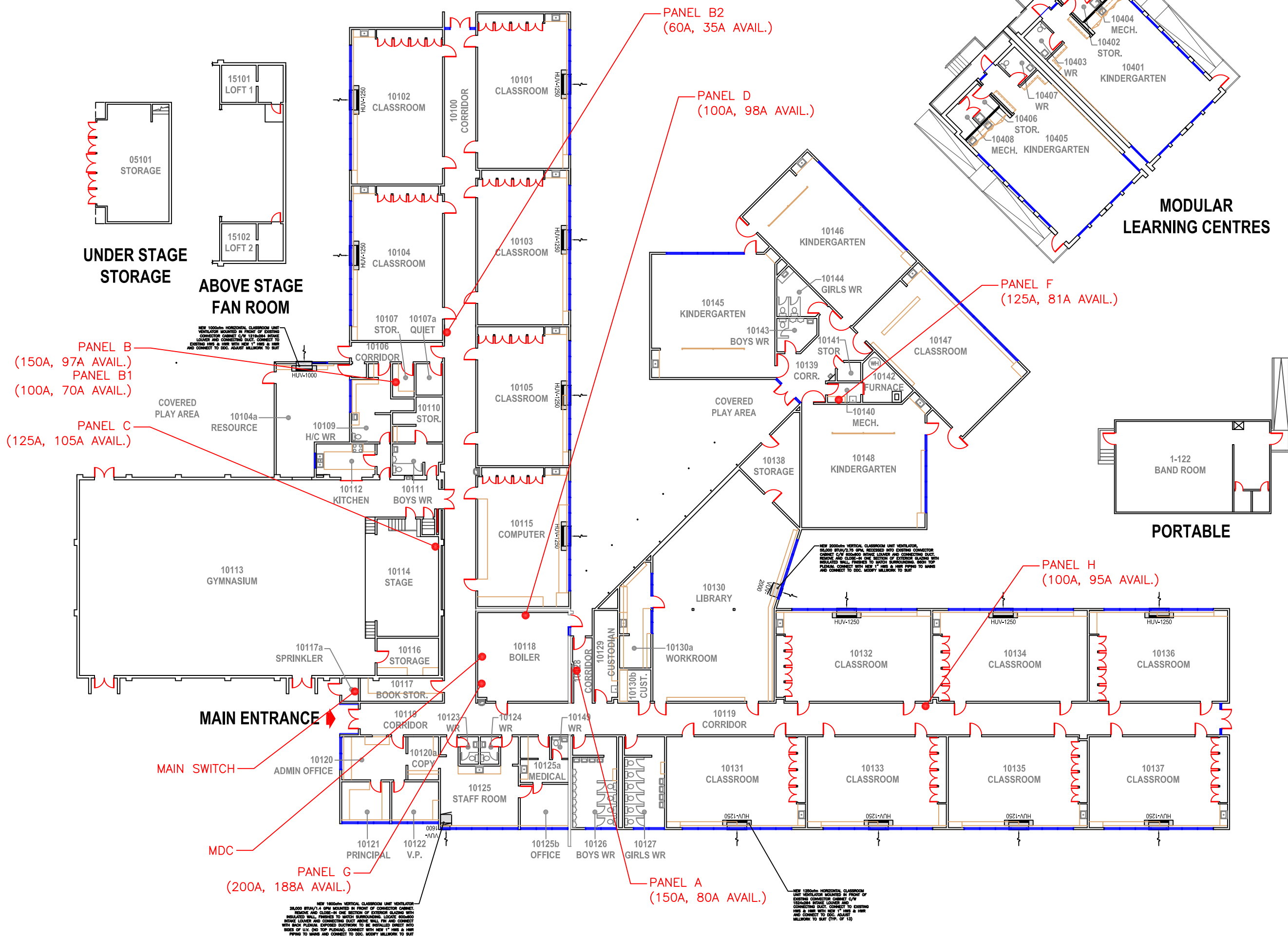
RICHMOND
SCHOOL DISTRICT NO. 38

School Board Office Facilities Services
7811 Granville Avenue 5200 River Road
Richmond BC V6V5A3 Richmond BC V7C1A4
Tel. 604-685-6000 Tel. 604-685-7828

Project Title
ALFRED B. DIXON
ELEMENTARY

Drawing Title
FLOOR
PLAN

Project No. 290-01	Drawing No. A-1
Scale NTS	of
Date 07 OCT 2022	
Drawn FJG	



MAIN SWITCH

MDC

PANEL G (200A, 188A AVAIL.)

PANEL A (150A, 80A AVAIL.)

PANEL H (100A, 95A AVAIL.)

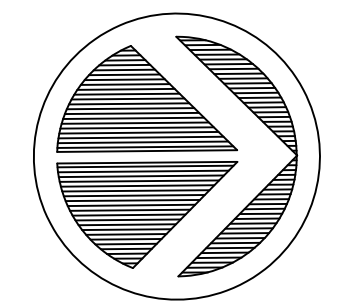
PANEL F (125A, 81A AVAIL.)

PANEL D (100A, 98A AVAIL.)

PANEL B2 (60A, 35A AVAIL.)

PANEL B (150A, 97A AVAIL.)
PANEL B1 (100A, 70A AVAIL.)

PANEL C (125A, 105A AVAIL.)



NO.	DATE	REVISION	DRAWN

Notes:

Consultant

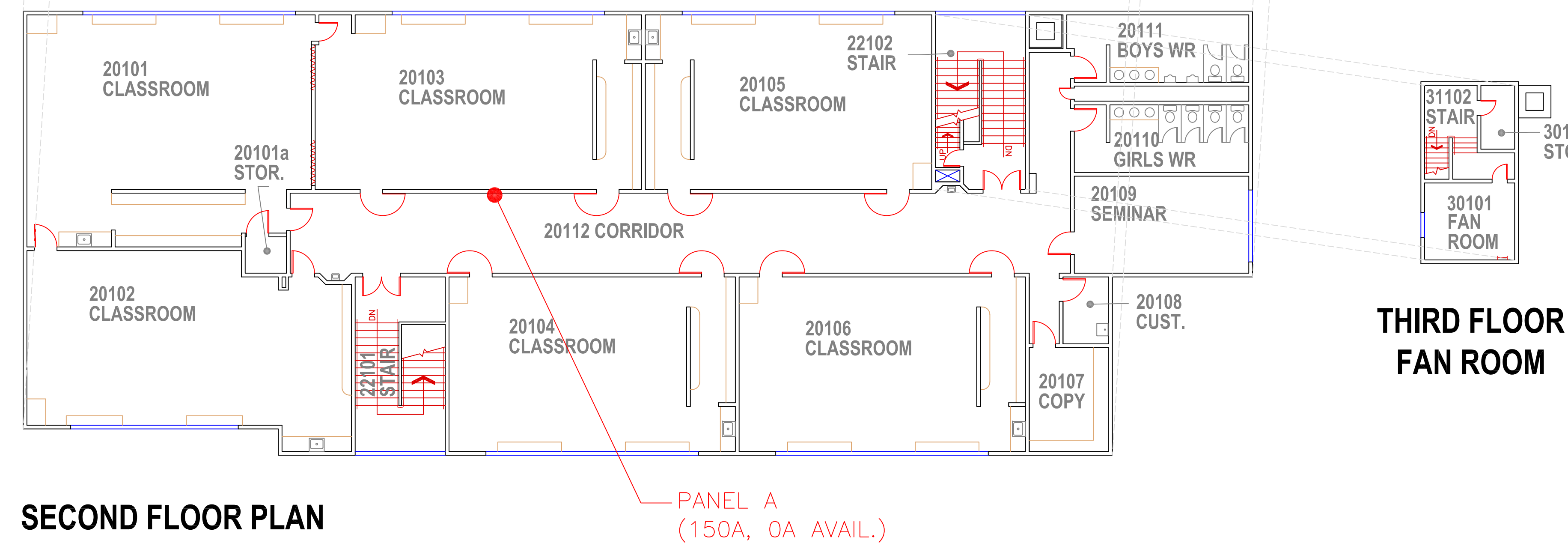
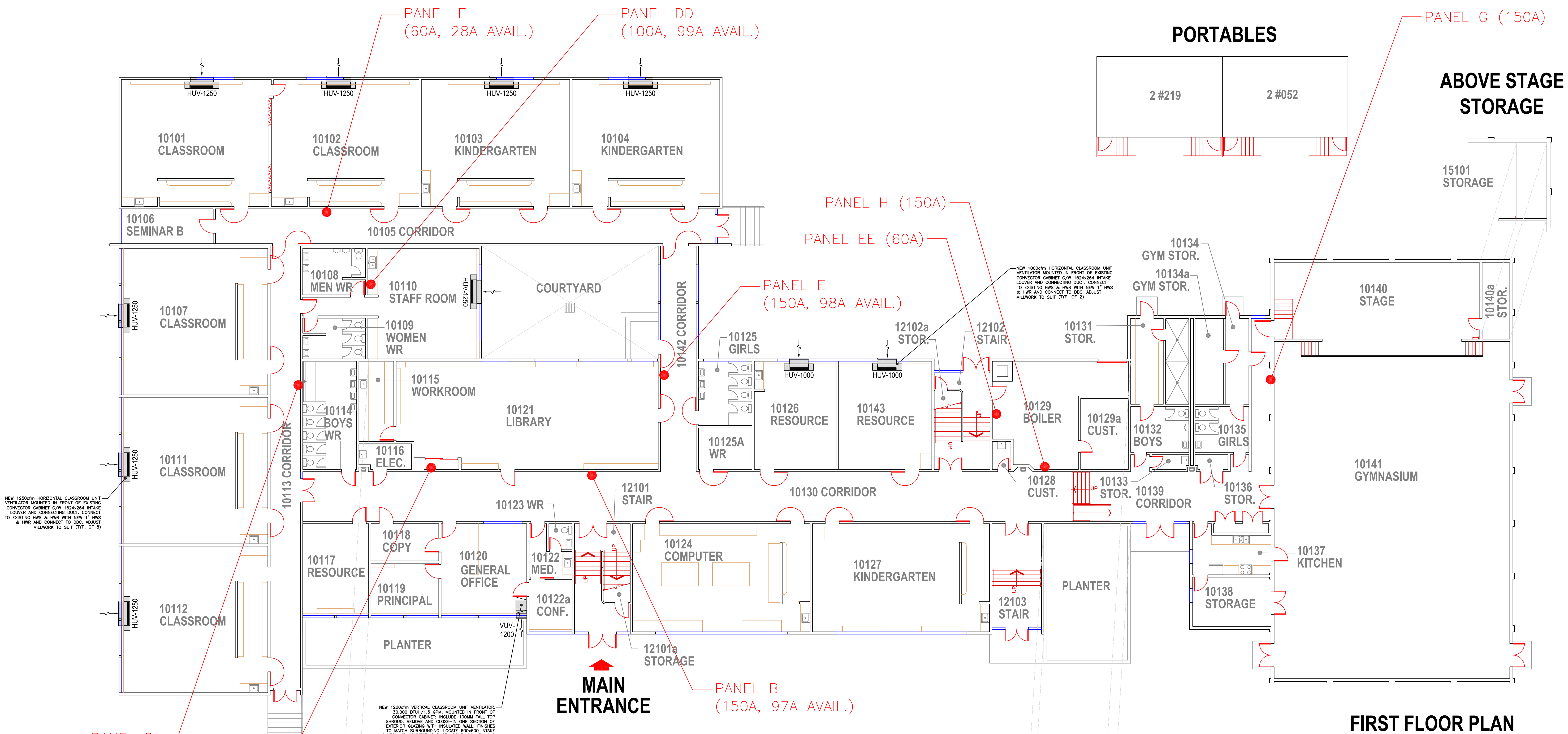
RICHMOND
SCHOOL DISTRICT NO. 38

School Board Office Facilities Services
7811 Granville Avenue 5200 River Road
Richmond BC V6V3A3 Richmond BC V7C1A4
Tel. 604-668-6000 Tel. 604-668-7828

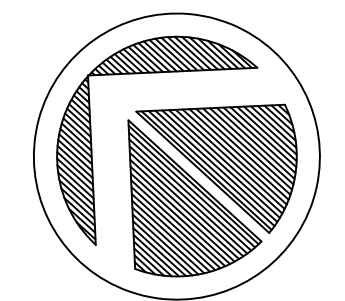
Project Title
GARDEN CITY
ELEMENTARY

Drawing Title
FLOOR
PLAN

Project No. 330-01	Drawing No. A-1
Scale NTS	
Date 26 OCT 2022	
Drawn FJG	



THIRD FLOOR FAN ROOM



NO.	DATE	REVISION	DRAWN

Notes:

Consultant

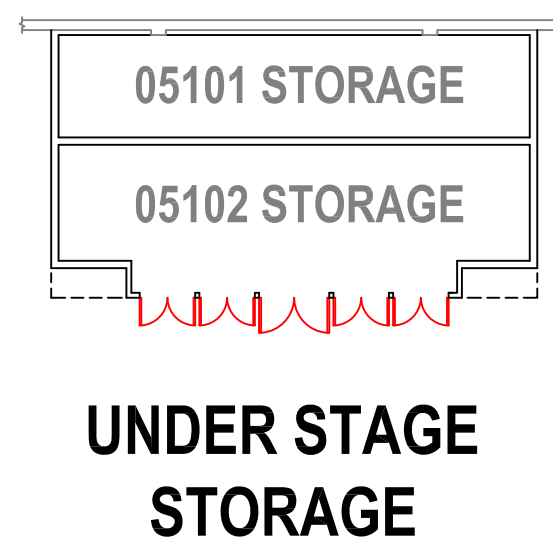
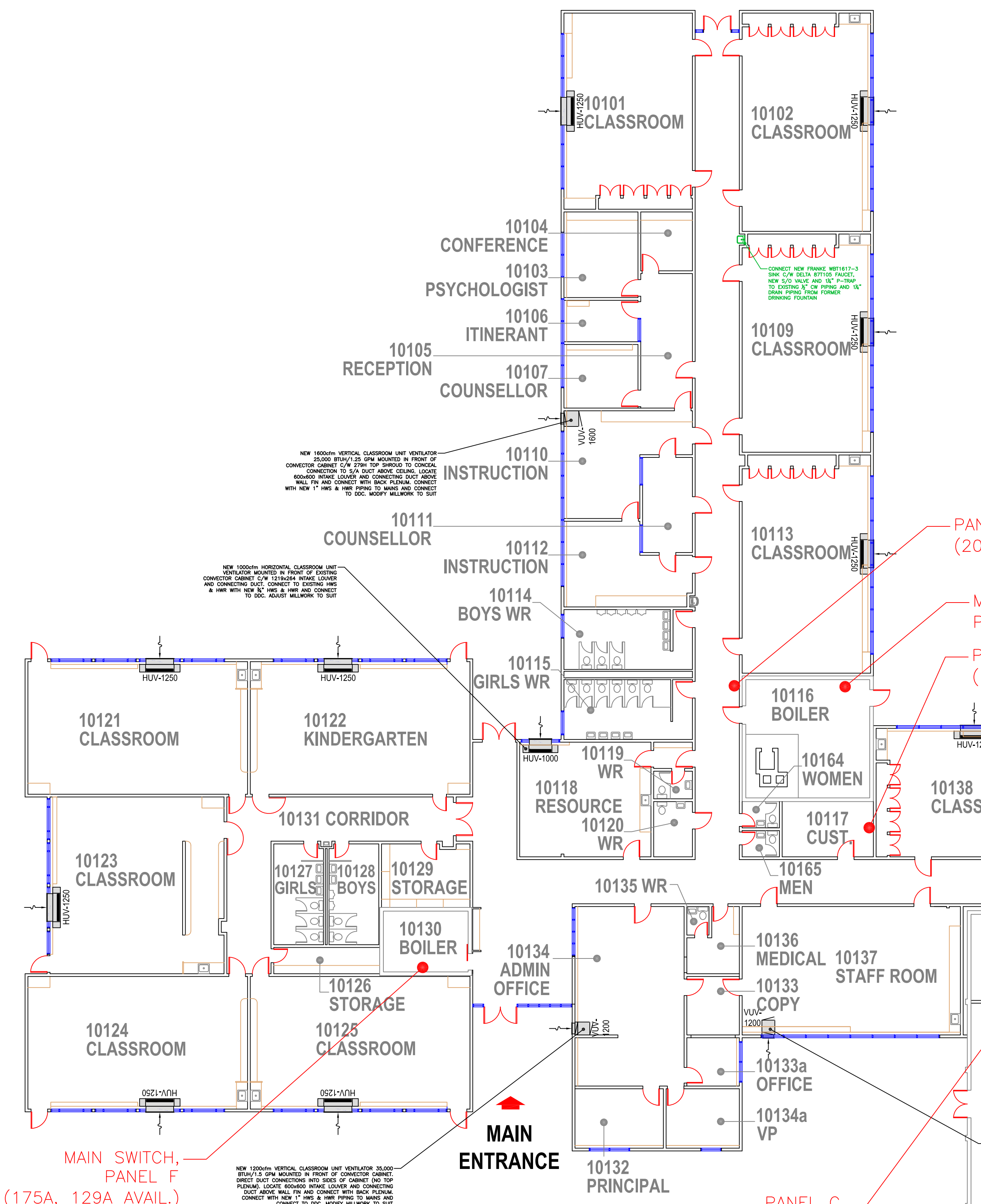
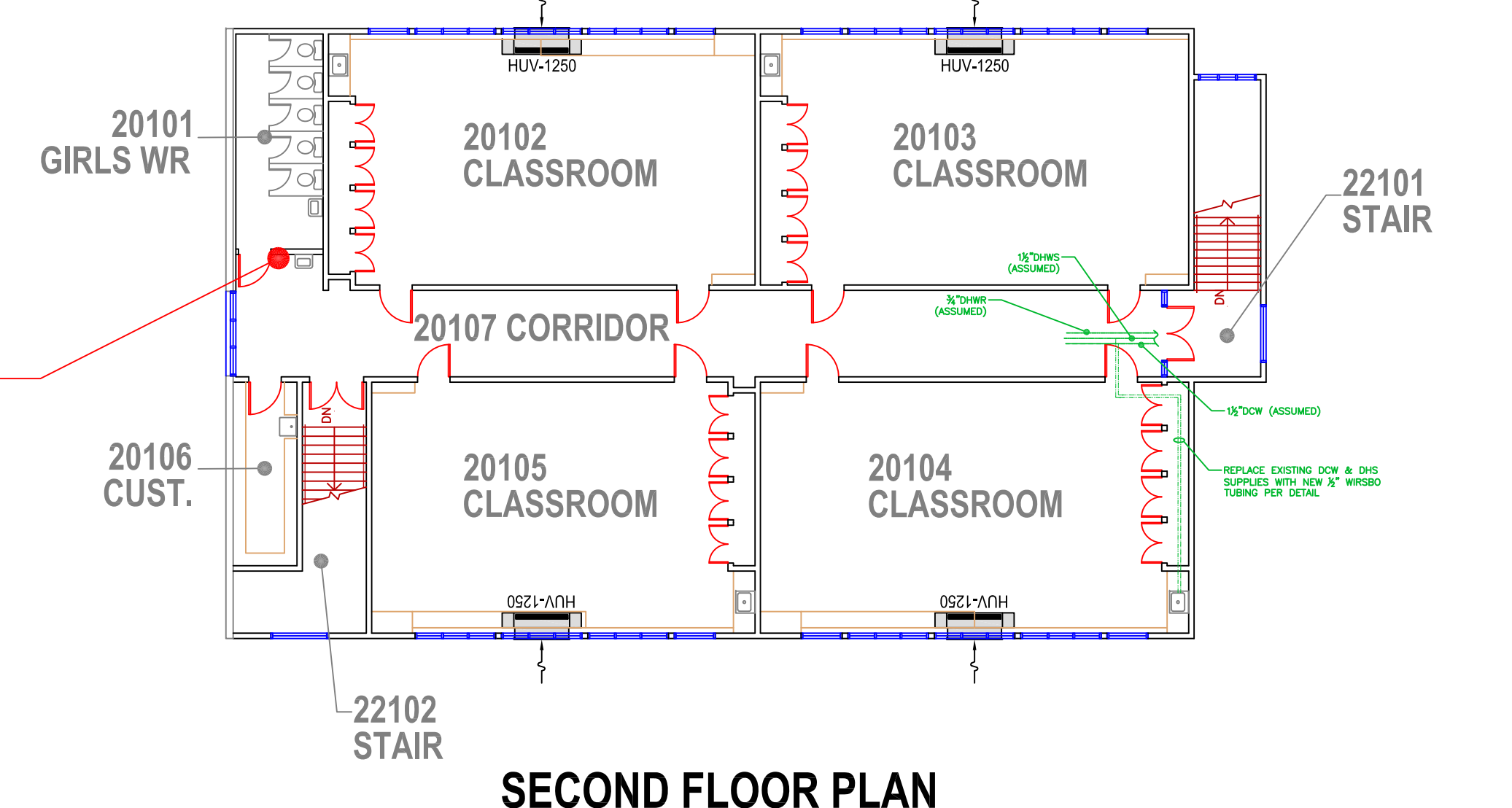
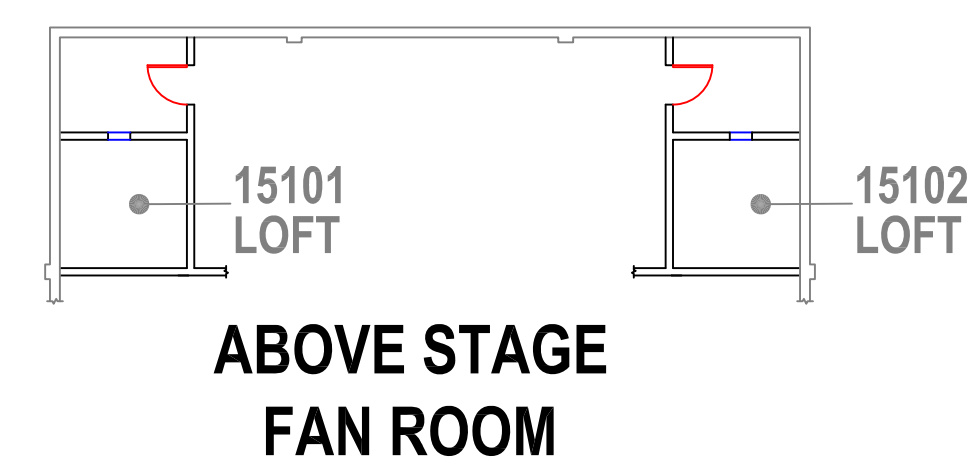
RICHMOND
SCHOOL DISTRICT NO. 38

School Board Office Facilities
7811 Granville Avenue 5200 River Road
Richmond BC V6V3A3 Richmond BC V7C1A4
Tel. 604-668-6000 Tel. 604-668-7828

Project Title
JAMES GILMORE
ELEMENTARY

Drawing Title
FLOOR
PLAN

Project No. 360-01	Drawing No. A-1
Scale NTS	
Date 26 OCT 2022	
Drawn FJG	



PANEL D2
(60A, 0A AVAIL.,
NEEDS UPGRADING)

PANEL A
(200A, 65A AVAIL.)

MDC
PANEL H (60A)

PANEL B
(150A, 115A AVAIL.)

PANEL D1
(100A, 96A AVAIL.)

PANEL D
(150A, 110A AVAIL.)

MAIN SWITCH,
PANEL F
(175A, 129A AVAIL.)

PANEL C
(200A, 160A AVAIL.)

PANEL GA
(60A, 59A AVAIL.)

PANEL G
(200A, 170A AVAIL.)

PANEL GG
(60A, 58A)

NEW 1800mm VERTICAL CLASSROOM UNIT VENTILATOR 35000 BRU/1.25 GPM MOUNTED IN FRONT OF EXISTING CONNECTOR CABINET C/W 2700 TOP BARRED TO CORRAL. LOCATE 600MM INTAKE LOWER AND CONNECTING DUCT ABOVE PLUMBING. LOCATE 600MM EXHAUST LOWER AND CONNECTING DUCT ABOVE PLUMBING. CONNECT WITH NEW 1" HRS & HRS PIPING TO MAINS AND CONNECT TO DCC. MODIFY MILLWORK TO SUIT.

NEW 1000mm HORIZONTAL CLASSROOM UNIT VENTILATOR MOUNTED IN FRONT OF EXISTING CONNECTOR CABINET C/W 1219x204 INTAKE LOWER AND CONNECTING DUCT ABOVE PLUMBING. LOCATE 600MM INTAKE LOWER AND CONNECTING DUCT ABOVE PLUMBING. LOCATE 600MM EXHAUST LOWER AND CONNECTING DUCT ABOVE PLUMBING. CONNECT WITH NEW 1" HRS & HRS PIPING TO MAINS AND CONNECT TO DCC. MODIFY MILLWORK TO SUIT.

NEW 1200mm VERTICAL CLASSROOM UNIT VENTILATOR 35000 BRU/1.25 GPM MOUNTED IN FRONT OF EXISTING CONNECTOR CABINET. BASH TOP S/A PLUMBING. LOCATE 600MM INTAKE LOWER AND CONNECTING DUCT ABOVE PLUMBING. LOCATE 600MM EXHAUST LOWER AND CONNECTING DUCT ABOVE PLUMBING. CONNECT WITH NEW 1" HRS & HRS PIPING TO MAINS AND CONNECT TO DCC. MODIFY MILLWORK TO SUIT.

NEW 1200mm VERTICAL CLASSROOM UNIT VENTILATOR 35000 BRU/1.25 GPM MOUNTED IN FRONT OF EXISTING CONNECTOR CABINET. BASH TOP S/A PLUMBING. LOCATE 600MM INTAKE LOWER AND CONNECTING DUCT ABOVE PLUMBING. LOCATE 600MM EXHAUST LOWER AND CONNECTING DUCT ABOVE PLUMBING. CONNECT WITH NEW 1" HRS & HRS PIPING TO MAINS AND CONNECT TO DCC. MODIFY MILLWORK TO SUIT.

NEW 1200mm VERTICAL CLASSROOM UNIT VENTILATOR 35000 BRU/1.25 GPM MOUNTED IN FRONT OF EXISTING CONNECTOR CABINET. BASH TOP S/A PLUMBING. LOCATE 600MM INTAKE LOWER AND CONNECTING DUCT ABOVE PLUMBING. LOCATE 600MM EXHAUST LOWER AND CONNECTING DUCT ABOVE PLUMBING. CONNECT WITH NEW 1" HRS & HRS PIPING TO MAINS AND CONNECT TO DCC. MODIFY MILLWORK TO SUIT.

NEW 1200mm VERTICAL CLASSROOM UNIT VENTILATOR 35000 BRU/1.25 GPM MOUNTED IN FRONT OF EXISTING CONNECTOR CABINET. BASH TOP S/A PLUMBING. LOCATE 600MM INTAKE LOWER AND CONNECTING DUCT ABOVE PLUMBING. LOCATE 600MM EXHAUST LOWER AND CONNECTING DUCT ABOVE PLUMBING. CONNECT WITH NEW 1" HRS & HRS PIPING TO MAINS AND CONNECT TO DCC. MODIFY MILLWORK TO SUIT.

NEW 1200mm VERTICAL CLASSROOM UNIT VENTILATOR 35000 BRU/1.25 GPM MOUNTED IN FRONT OF EXISTING CONNECTOR CABINET. BASH TOP S/A PLUMBING. LOCATE 600MM INTAKE LOWER AND CONNECTING DUCT ABOVE PLUMBING. LOCATE 600MM EXHAUST LOWER AND CONNECTING DUCT ABOVE PLUMBING. CONNECT WITH NEW 1" HRS & HRS PIPING TO MAINS AND CONNECT TO DCC. MODIFY MILLWORK TO SUIT.

NEW 1200mm VERTICAL CLASSROOM UNIT VENTILATOR 35000 BRU/1.25 GPM MOUNTED IN FRONT OF EXISTING CONNECTOR CABINET. BASH TOP S/A PLUMBING. LOCATE 600MM INTAKE LOWER AND CONNECTING DUCT ABOVE PLUMBING. LOCATE 600MM EXHAUST LOWER AND CONNECTING DUCT ABOVE PLUMBING. CONNECT WITH NEW 1" HRS & HRS PIPING TO MAINS AND CONNECT TO DCC. MODIFY MILLWORK TO SUIT.

NEW 1200mm VERTICAL CLASSROOM UNIT VENTILATOR 35000 BRU/1.25 GPM MOUNTED IN FRONT OF EXISTING CONNECTOR CABINET. BASH TOP S/A PLUMBING. LOCATE 600MM INTAKE LOWER AND CONNECTING DUCT ABOVE PLUMBING. LOCATE 600MM EXHAUST LOWER AND CONNECTING DUCT ABOVE PLUMBING. CONNECT WITH NEW 1" HRS & HRS PIPING TO MAINS AND CONNECT TO DCC. MODIFY MILLWORK TO SUIT.

NEW 1200mm VERTICAL CLASSROOM UNIT VENTILATOR 35000 BRU/1.25 GPM MOUNTED IN FRONT OF EXISTING CONNECTOR CABINET. BASH TOP S/A PLUMBING. LOCATE 600MM INTAKE LOWER AND CONNECTING DUCT ABOVE PLUMBING. LOCATE 600MM EXHAUST LOWER AND CONNECTING DUCT ABOVE PLUMBING. CONNECT WITH NEW 1" HRS & HRS PIPING TO MAINS AND CONNECT TO DCC. MODIFY MILLWORK TO SUIT.

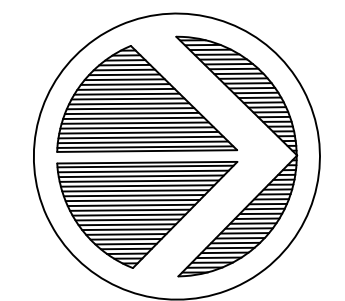
NEW 1200mm HORIZONTAL CLASSROOM UNIT VENTILATOR MOUNTED IN FRONT OF EXISTING CONNECTOR CABINET C/W 1219x204 INTAKE LOWER AND CONNECTING DUCT ABOVE PLUMBING. LOCATE 600MM INTAKE LOWER AND CONNECTING DUCT ABOVE PLUMBING. LOCATE 600MM EXHAUST LOWER AND CONNECTING DUCT ABOVE PLUMBING. CONNECT WITH NEW 1" HRS & HRS PIPING TO MAINS AND CONNECT TO DCC. MODIFY MILLWORK TO SUIT.

REPLACE EXISTING DOW & DHS SUPPLIES WITH NEW 8" WIRRO TUBING PER DETAIL.

NEW 1200mm VERTICAL CLASSROOM UNIT VENTILATOR 35000 BRU/1.25 GPM MOUNTED IN FRONT OF EXISTING CONNECTOR CABINET. BASH TOP S/A PLUMBING. LOCATE 600MM INTAKE LOWER AND CONNECTING DUCT ABOVE PLUMBING. LOCATE 600MM EXHAUST LOWER AND CONNECTING DUCT ABOVE PLUMBING. CONNECT WITH NEW 1" HRS & HRS PIPING TO MAINS AND CONNECT TO DCC. MODIFY MILLWORK TO SUIT.

NEW 1200mm VERTICAL CLASSROOM UNIT VENTILATOR 35000 BRU/1.25 GPM MOUNTED IN FRONT OF EXISTING CONNECTOR CABINET. BASH TOP S/A PLUMBING. LOCATE 600MM INTAKE LOWER AND CONNECTING DUCT ABOVE PLUMBING. LOCATE 600MM EXHAUST LOWER AND CONNECTING DUCT ABOVE PLUMBING. CONNECT WITH NEW 1" HRS & HRS PIPING TO MAINS AND CONNECT TO DCC. MODIFY MILLWORK TO SUIT.

NEW 1200mm VERTICAL CLASSROOM UNIT VENTILATOR 35000 BRU/1.25 GPM MOUNTED IN FRONT OF EXISTING CONNECTOR CABINET. BASH TOP S/A PLUMBING. LOCATE 600MM INTAKE LOWER AND CONNECTING DUCT ABOVE PLUMBING. LOCATE 600MM EXHAUST LOWER AND CONNECTING DUCT ABOVE PLUMBING. CONNECT WITH NEW 1" HRS & HRS PIPING TO MAINS AND CONNECT TO DCC. MODIFY MILLWORK TO SUIT.



NO.	DATE	REVISION	DRAWN

Notes:

Consultant

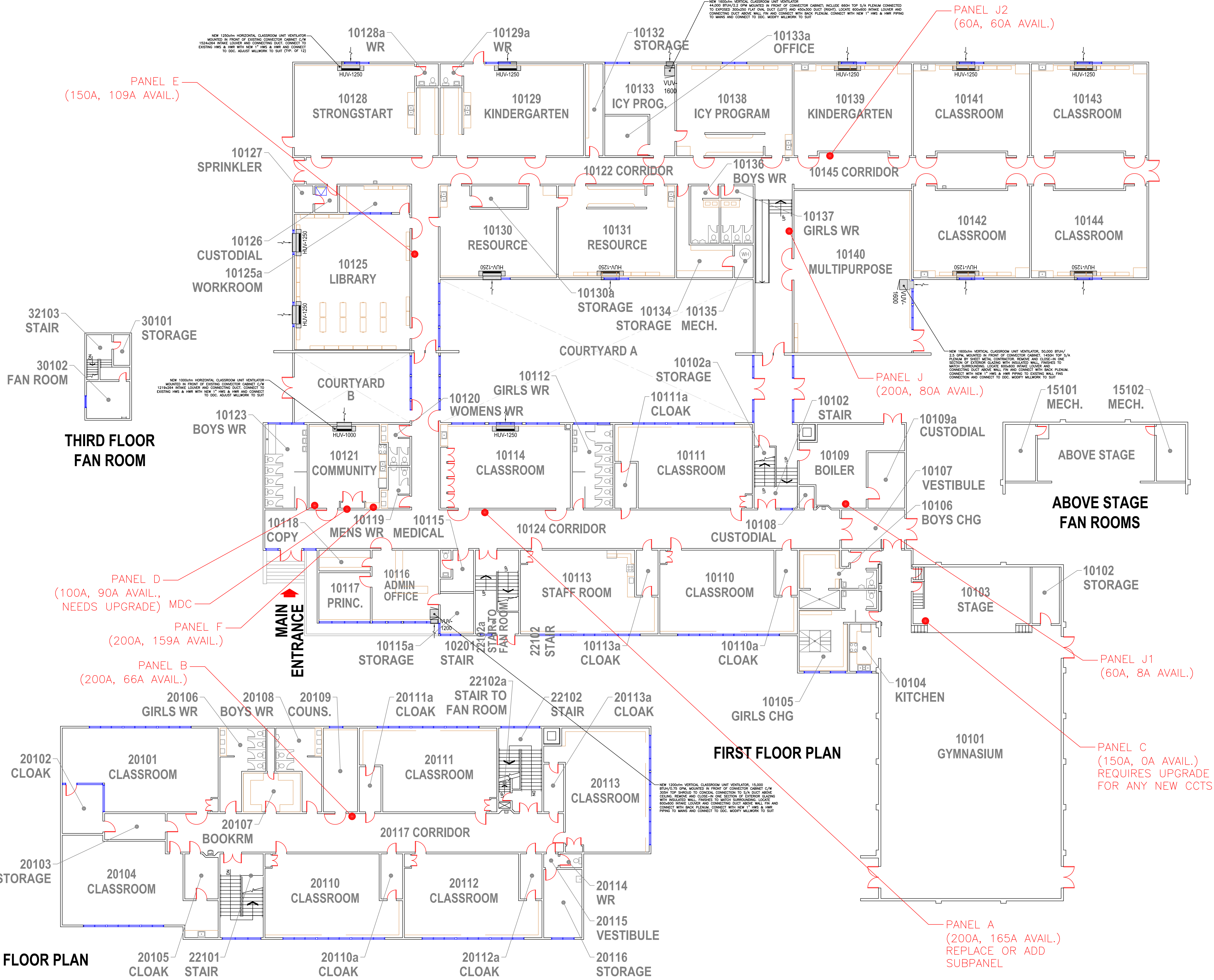
RICHMOND
SCHOOL DISTRICT NO. 38

School Board Office Facilities Services
7811 Granville Avenue 5200 River Road
Richmond BC V6V3A3 Richmond BC V7C1A4
Tel. 604-668-6000 Tel. 604-668-7828

Project Title
R.M. GRAUER
ELEMENTARY

Drawing Title
FLOOR
PLAN

Project No. 370-01	Drawing No. A-1
Scale NTS	of
Date 07 OCT 2022	
Drawn FJG	



PANEL E
(150A, 109A AVAIL.)

PANEL J2
(60A, 60A AVAIL.)

PANEL J
(200A, 80A AVAIL.)

PANEL D
(100A, 90A AVAIL.,
NEEDS UPGRADE) MDC

PANEL F
(200A, 159A AVAIL.)

PANEL B
(200A, 66A AVAIL.)

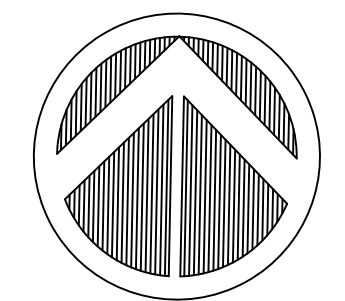
PANEL J1
(60A, 8A AVAIL.)

PANEL C
(150A, 0A AVAIL.)
REQUIRES UPGRADE
FOR ANY NEW CCTS

PANEL A
(200A, 165A AVAIL.)
REPLACE OR ADD
SUBPANEL

SECOND FLOOR PLAN

FIRST FLOOR PLAN



NO.	DATE	REVISION	DRAWN

Notes:

Consultant

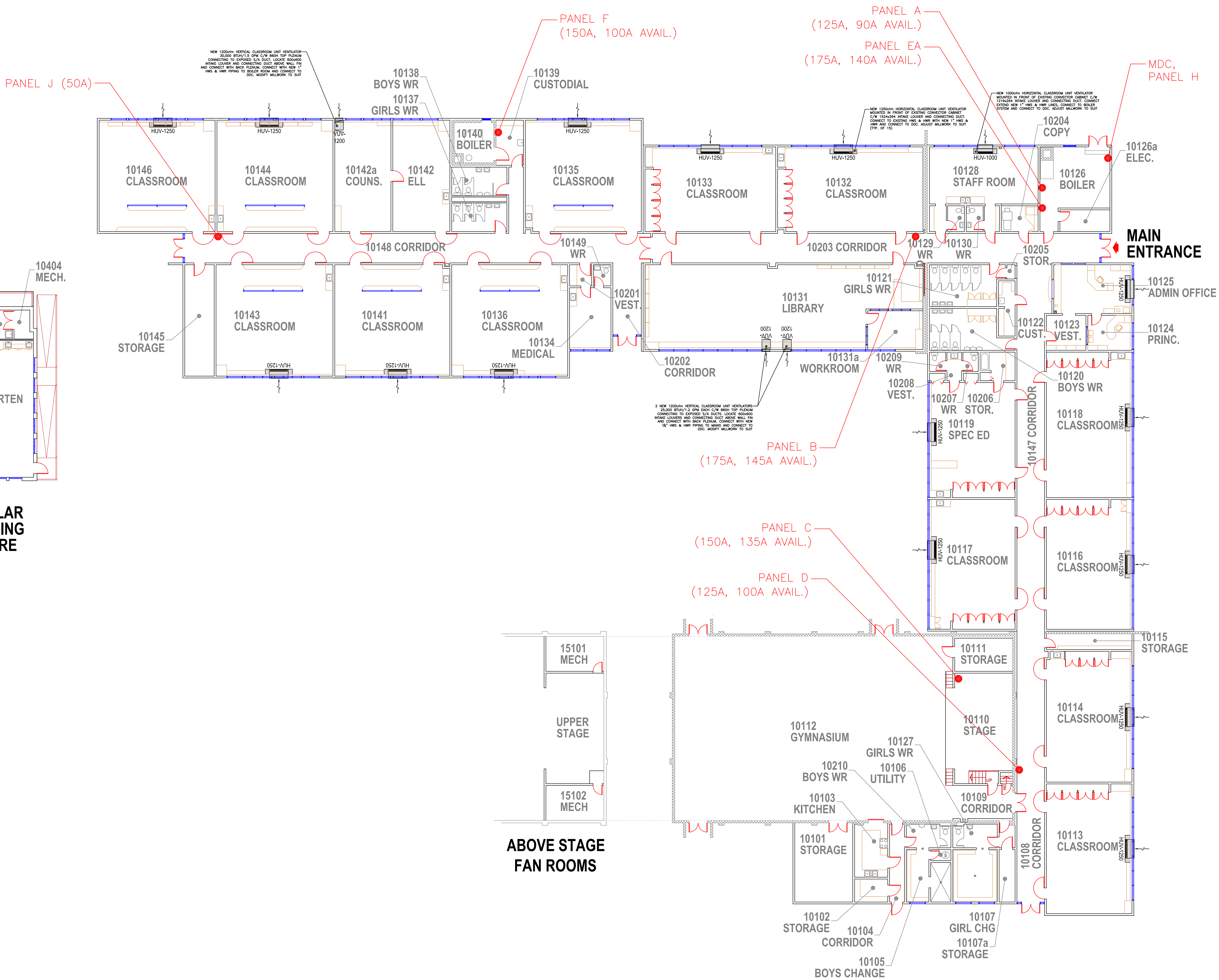
RICHMOND
SCHOOL DISTRICT NO. 38

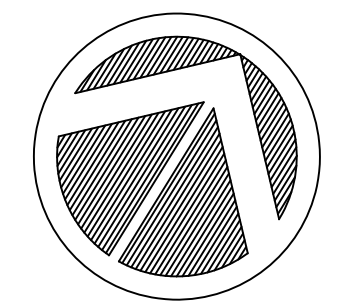
School Board Office Facilities Services
7811 Granville Avenue 5200 River Road
Richmond BC V6V3A3 Richmond BC V7C1A4
Tel. 604-668-6000 Tel. 604-668-7828

Project Title
THOMAS KIDD
ELEMENTARY

Drawing Title
FLOOR
PLAN

Project No. 400-01	Drawing No. A-1
Scale NTS	of
Date 05 OCT 2022	
Drawn FJG	





NO.	DATE	REVISION	DRAWN

Notes:

Consultant

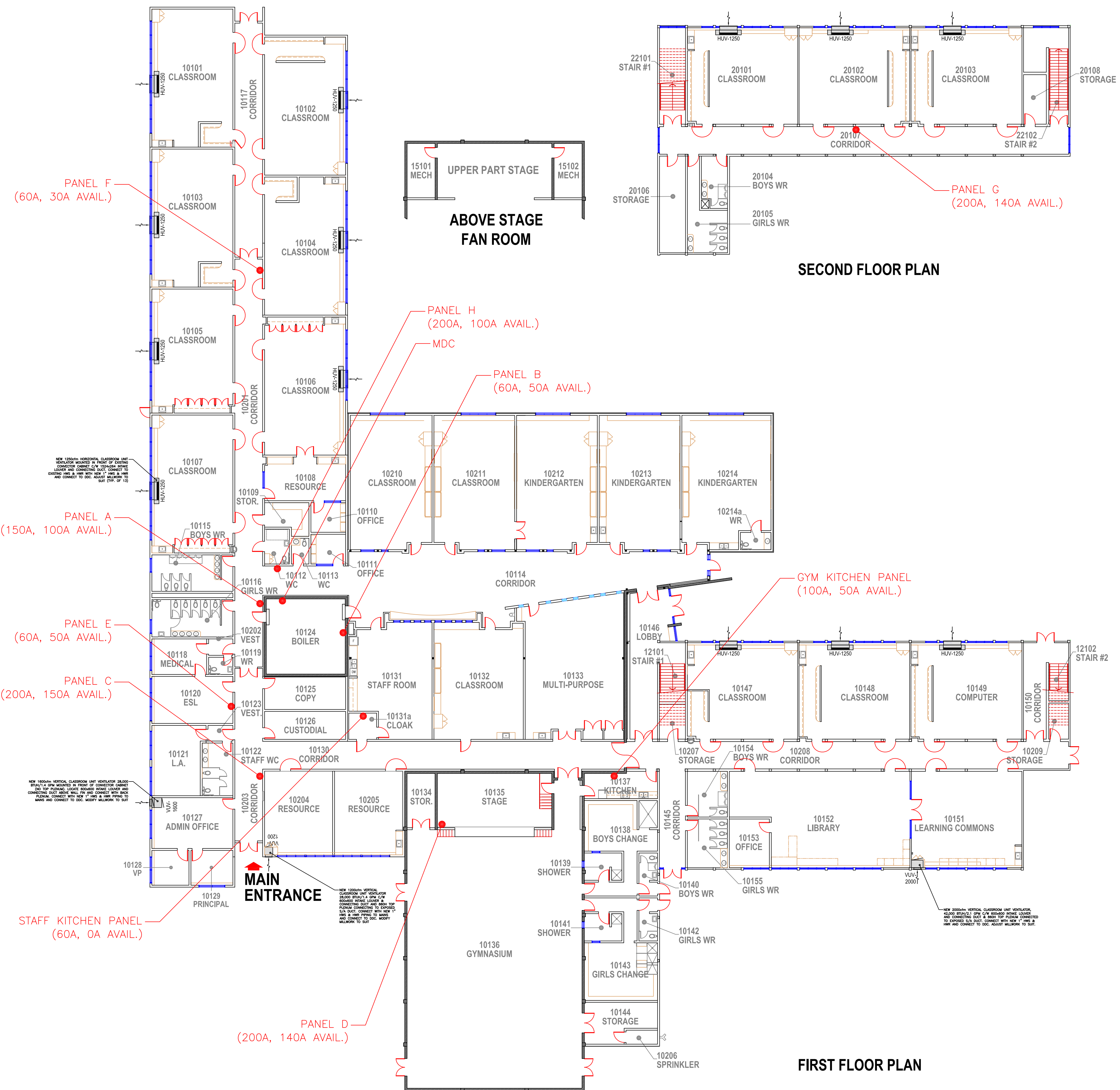
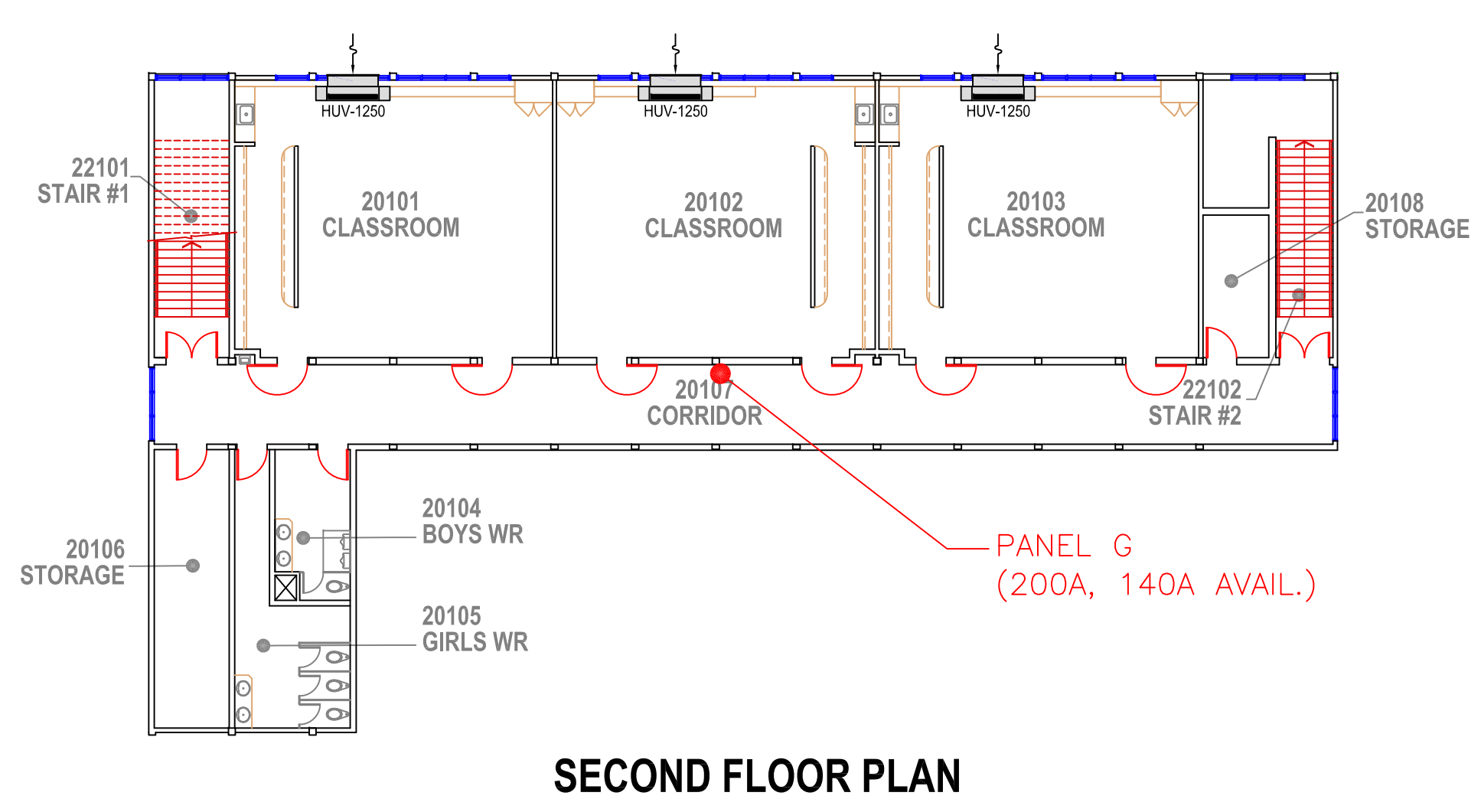
RICHMOND
SCHOOL DISTRICT NO. 38

School Board Office Facilities Services
7811 Granville Avenue 5200 River Road
Richmond BC V6V3A3 Richmond BC V7C1A4
Tel. 604-668-6000 Tel. 604-668-7828

Project Title
WALTER LEE
ELEMENTARY

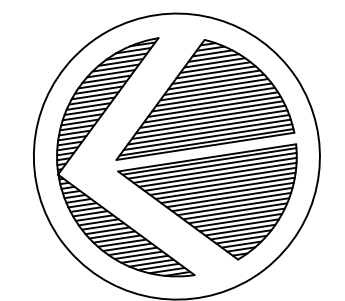
Drawing Title
FLOOR
PLAN

Project No. 430-01	Drawing No. A-1
Scale NTS	of
Date 05 OCT 2022	
Drawn FJG	



SECOND FLOOR PLAN

FIRST FLOOR PLAN



NO.	DATE	REVISION	DRAWN

Notes:

Consultant

RICHMOND
SCHOOL DISTRICT NO. 38

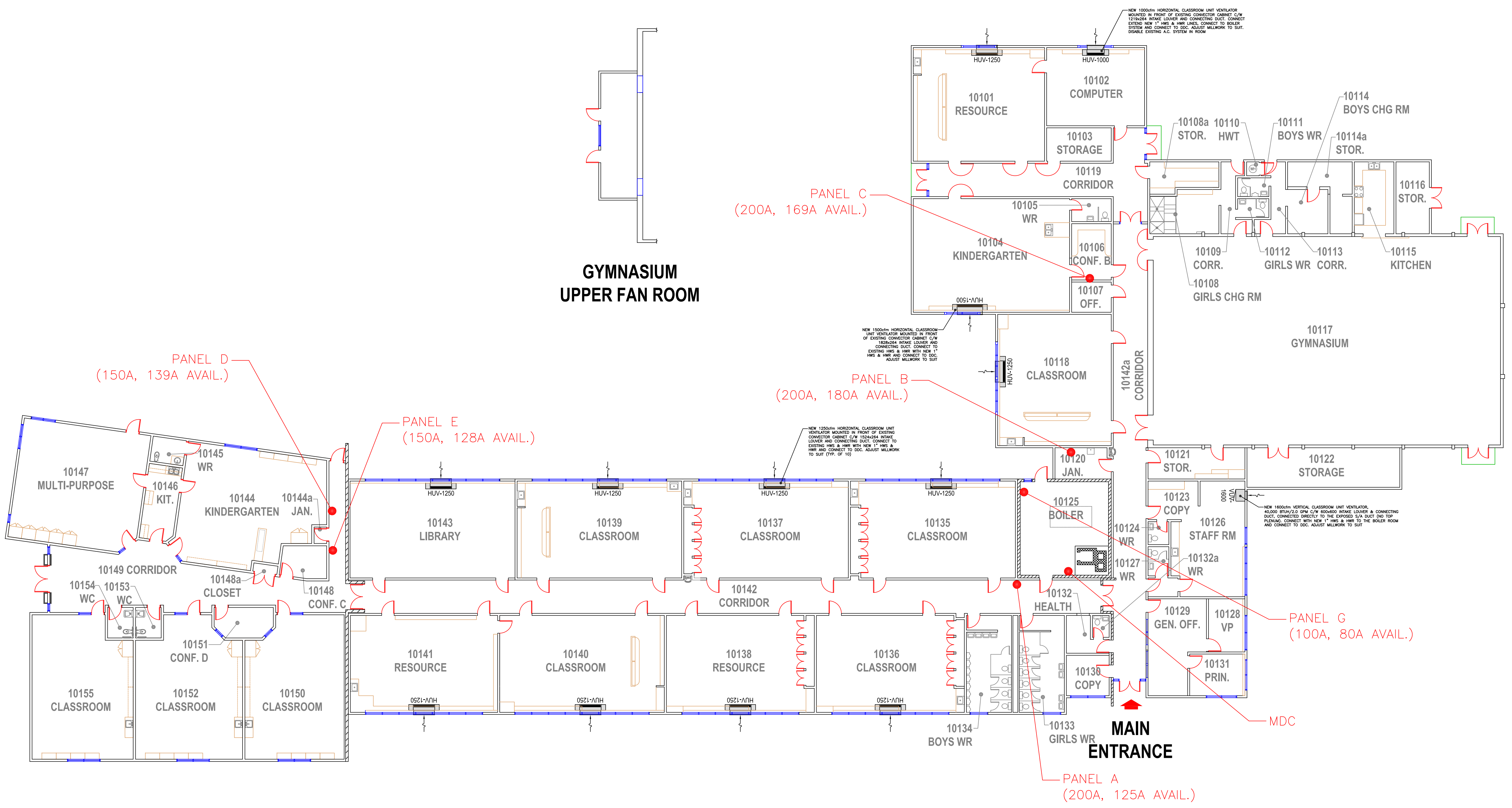
School Board Office Facilities Services
7811 Granville Avenue 5200 River Road
Richmond BC V6V3A3 Richmond BC V7C1A4
Tel. 604-668-6000 Tel. 604-668-7828

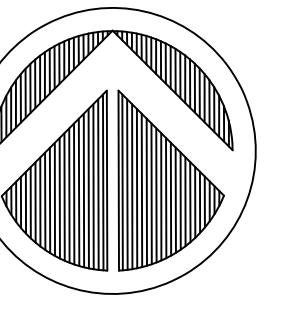
Project Title
DONALD E. MCKAY
ELEMENTARY

Drawing Title
FLOOR
PLAN

Project No. 450-01	Drawing No. A-1
Scale Date 06 OCT 2022	of
Drawn FJG	

**GYMNASIUM
UPPER FAN ROOM**





NO.	DATE	REVISION	DRAWN

Notes:

Consultant:

RICHMOND
SCHOOL DISTRICT NO. 38

School Board Office Facilities Services
7811 Granville Avenue 5200 River Road
Richmond BC V6V3A3 Richmond BC V7C1A4
Tel. 604-668-6000 Tel. 604-668-7828

Project Title
MANOAH STEVES
ELEMENTARY

Drawing Title
FLOOR PLAN

Project No. 520-01	Drawing No. A-1
Scale NTS	of
Date 05 DEC 2022	
Drawn FJG	

